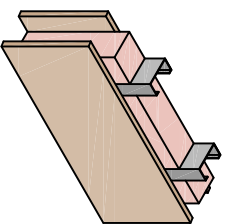


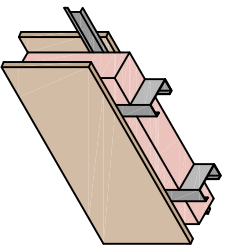
STC 38 Assembly

- N.B.C.C. 2015 A-9.10.3.1.A. (S4c)
- 3-5/8" Minimum Studs
- 1 Layer 5/8" Gypsum Board



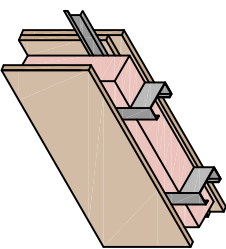
STC 48 Assembly

- N.B.C.C. 2015 A-9.10.3.1.A. (S4a)
- 3-5/8" Minimum Studs
- 3-5/8" Fiberglass Insulation
- 1 Layer 5/8" Gypsum Board



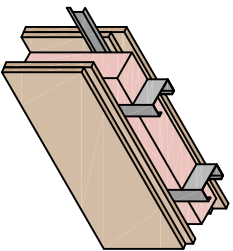
STC 50 Assembly

- N.B.C.C. 2015 A-9.10.3.1.A. (S11a)
- 3-5/8" Minimum Studs
- 3-5/8" Fiberglass Insulation
- RC1 Channel 1 Side
- 1 Layer 5/8" Gypsum Board



STC 54 Assembly

- N.B.C.C. 2015 A-9.10.3.1.A. (S12a)
- 3-5/8" Minimum Studs
- 3-5/8" Fiberglass Insulation
- RC1 Channel 1 Side
- 2 Layers & 1 Layer 5/8" Gypsum Board



STC 60 Assembly

- N.B.C.C. 2015 A-9.10.3.1.A. (S14a)
- 3-5/8" Minimum Studs
- 3-5/8" Fiberglass Insulation
- RC1 Channel 1 Side
- 2 Layers 5/8" Gypsum Board

For Walls Also Requiring Fire Ratings See
UL-U423 for Similar Assemblies.

P: 1-877-251-6875
F: 1-866-873-0360
INFO@TRUSSES.CA



**SOUND RATED
WALL
ASSEMBLIES**