



A Turnkey solution for all of your CFS projects

VanderWal Homes & Commercial Group Inc. is Canada's leading structural Cold-Formed Steel specialist with over 20 years of experience in the design, fabrication, delivery and install of cold-formed steel components. Our team consists of professional designers and construction experts who thrive on developing framing and building solutions that can be adapted and customized to fit any building project. Our team is dedicated to providing the highest quality Cold-Formed Steel (CFS) framing solutions in the form of CFS Truss Framing Packages, CFS Floor Framing Packages, CFS Panelized Wall Framing Packages, and CFS Construction Accessories. VanderWal Homes & Commercial Group Inc. strives to maintain nationwide presence and is in an unrivalled position to deliver to any location in Canada.

VanderWal Homes & Commercial Group is absolutely committed to our clients, partners and employees.

INTRODUCTION TO CFS

- Cold-Formed Steel (CFS) components are fabricated using hot dipped galvanized sheets and a cold forming process.
- CFS members have been used in buildings, bridges, storage racks, grain bins, car bodies, railway coaches, highway products, transmission towers, transmission poles, drainage products, drainage facilities, various types of equipment and others.
- These types of sections are cold-formed from steel sheet, strip, plate, or flat bar in roll forming machines or by press brake (machine press) or bending operations.

ADVANTAGES OF CFS

- Lightness in weight
- High strength and stiffness
- Ease of prefabrication and mass production
- Fast and easy erection and installation
- Substantial elimination of delays due to weather
- More accurate detailing
- Non shrinking and non-creeping at ambient temperatures
- No formwork needed
- Termite-proof and rot proof
- Uniform quality
- Economy in transportation and handling
- Non combustibility
- Recyclable material

VanderWal Group

VanderWal Group is Canada's only coast-to-coast Cold-Formed Steel (CFS) framing system specialist. Using the very latest in technology and methodology to deliver the highest quality, precision engineered components, VanderWal Group excels in the design, engineering, fabrication and installation of CFS framing.

VanderWal Group's galvanized CFS framing components are 100% non-combustible, 100% recycled/recyclable material and have a working life of hundreds of years, even under aggressive conditions. It will not crack, shrink, warp or twist and is an inorganic material that will not release toxic off-gasses into the building envelope.

It has multi-story capabilities, the highest strength-to-weight ratio of any typical building material, assists in the accrual of LEED points, and with pre-engineering and prefabrication is erected in a fraction of the time of conventional stick framing.

Cold-Formed Steel Trusses

Long clear spans – Can comfortably span 25m (80') – Fewer intermediate walls, larger usable coverage and maximum design versatility – any conceivable roof/ceiling profile achievable.

Precision – Design and pre-engineering by experienced truss professionals using latest software.

Pre-fabrications – Trusses pre-fabricated by dedicated professionals in controlled environment.

Roof section hoisting – If space allows roof sections of pre-assembled trusses can be built at grade level and craned into place – saves time, money, manpower and the safety of workers.

Fast dry-in – Project covered in quickly – Interior trades work in comfort regardless of weather.

Cold-Formed Steel Wall Panels

Pre-panelization – Wall panels custom built according to specification - time, labour and cost savings.

Compatibility – Compatible with all standard sheathing/insulation/finish systems.

Optimized design – Eliminate job site errors, reduced waste, and emphasis on precision.

Structural integrity – Components remain square and true, window/doors fit perfectly.

Light weight panels – Reduced stress on foundations and install crews.

Cold-Formed Steel Floors

Multi-system – CFS trusses, CJoist, Trade-Ready, Megajoist, Hambro, ComSlab floor system and various composite floor systems.

Span capability – Certain applications allow clear span of up to 9m (30').

Cost-effective – Cost effective, lightweight alternative to open-web trusses, bar joist, engineered lumber, cast in place or hollow-core floor assemblies.

Pre-panelization – Where possible, VanderWal Group will pre-panelize floor systems to ensure dimensional integrity and speed of installation.

For full product specifications and ULC/UL reports in English and French visit our website at trusses.ca

SPECIALIST IN COLD-FORMED STEEL CONSTRUCTION

Quality • Integrity • Design • Fabricate • Delivery • Experience
Combined 50+ years of excellence...and counting.

**Engineered
Trusses**

**System
Accessories**

**Panelized
Walls**

**Connection
Details**

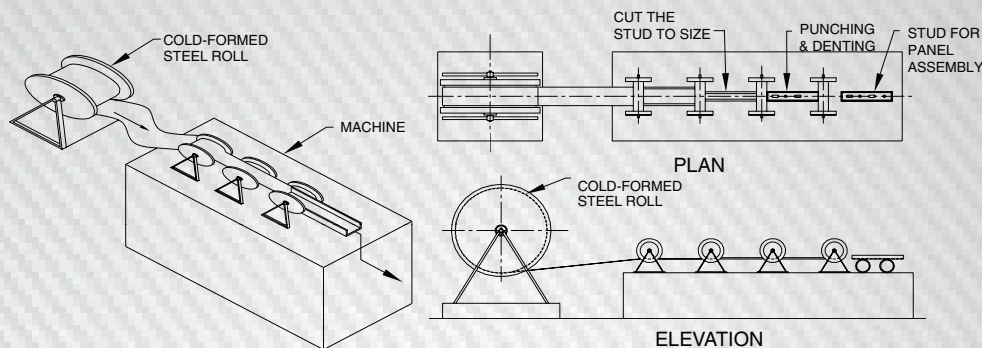
**Panelized
Floors**

**ULC / UL
Classifications**

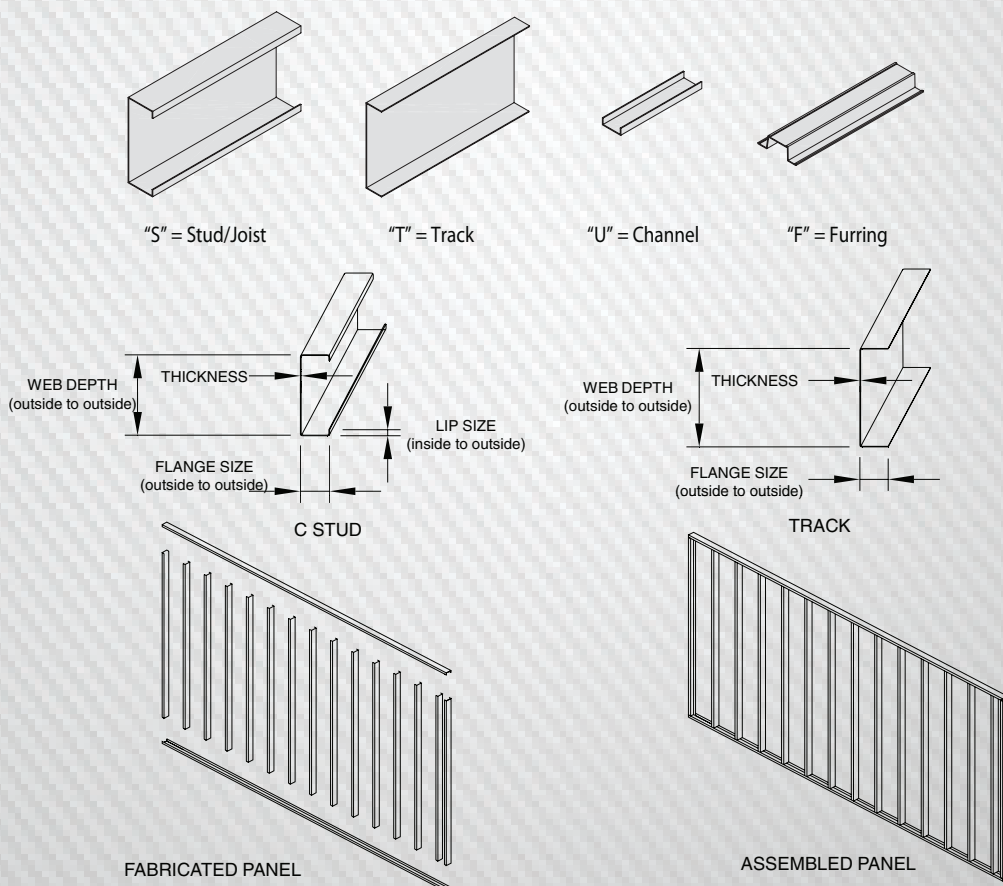
SPECIALIST IN COLD-FORMED STEEL CONSTRUCTION

Quality • Integrity • Design • Fabricate • Delivery • Experience
Combined 50+ years of excellence...and counting.

METHOD OF MANUFACTURING CFS



COLD-FORMED STEEL SECTION PRODUCTION PROCESS DIAGRAM



SPECIALIST IN COLD-FORMED STEEL CONSTRUCTION

Quality • Integrity • Design • Fabricate • Delivery • Experience
Combined 50+ years of excellence...and counting.

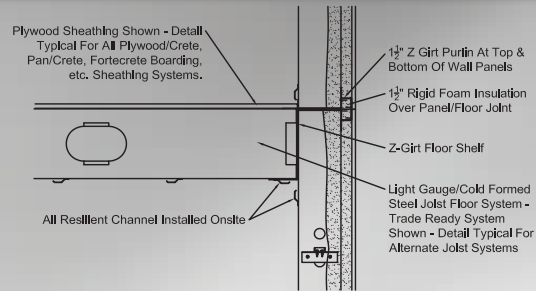
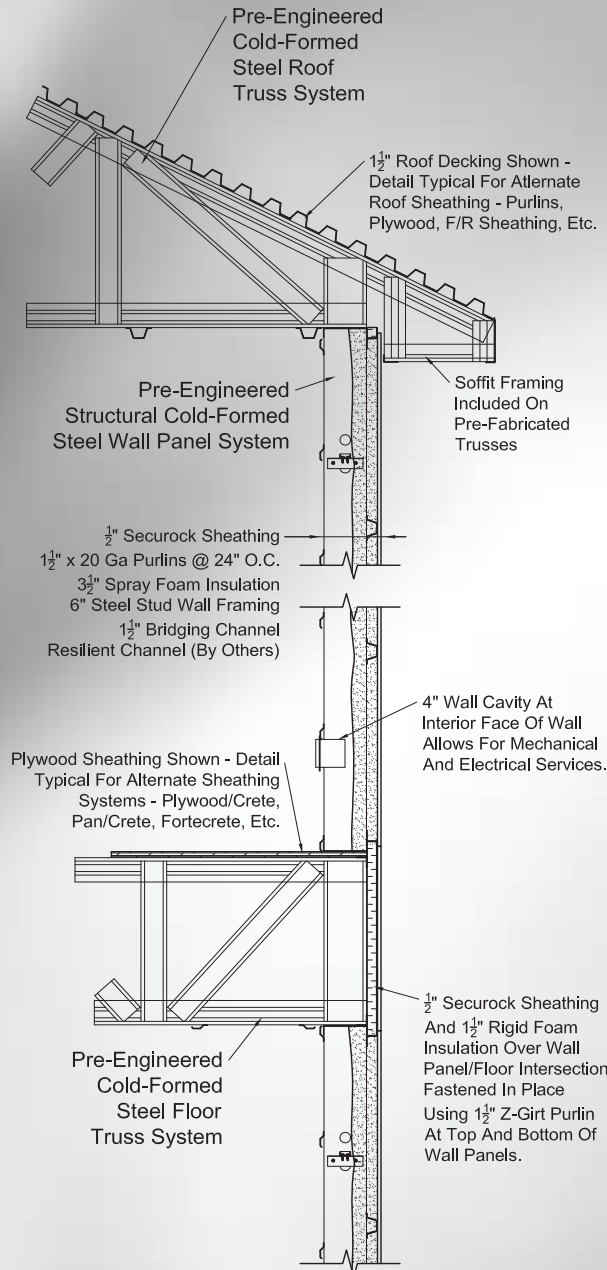
Fire Rated Assemblies

ASSEMBLY TYPE	UL/ULC ASSEMBLY	45 MIN.	1 HR.	1 ½ HR.	2 HR.	NOTES
ROOF						
CFS TRUSS	ULC-R500		YES	YES	YES	
	ULC-R501		YES	YES		
	UL-P521		YES	YES	YES	
	UL-P523		YES	YES		
WALL						
CFS STUD	ULC -U419	YES	YES	YES	YES	
	UL-U423	YES	YES	YES	YES	
	UL-U425	YES	YES	YES	YES	
FLOOR						
CFS STUD JOIST	ULC-M511	YES	YES			5/8" PLYWOOD DECK
	ULC-I523		YES			STEEL PAN & CONCRETE
COMSLAB	ULC-D500			YES	YES	
	ULC-F909		YES	YES		
	ULC-F918				YES	
CFS TRUSS JOIST	UL-G540		YES		YES	STEEL DECK & CONCRETE
	UL-L549		YES			WOOD SUBFLOOR
	UL-L565		YES			WOOD SUBFLOOR

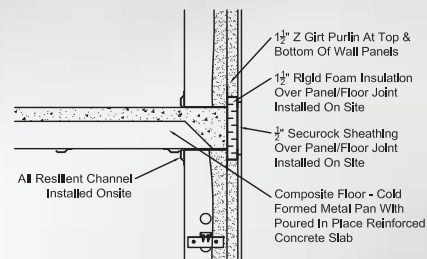
SPECIALIST IN COLD-FORMED STEEL CONSTRUCTION

Quality • Integrity • Design • Fabricate • Delivery • Experience
Combined 50+ years of excellence...and counting.

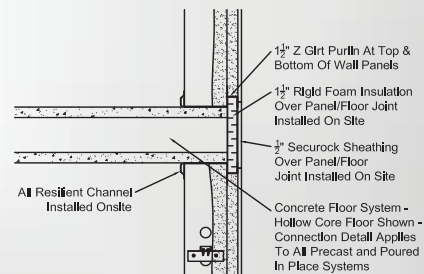
SPECIALIST IN COLD-FORMED STEEL CONSTRUCTION



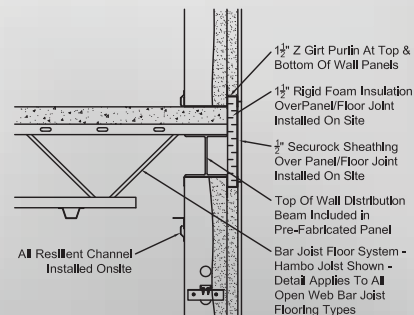
CFS Floor Joist To Wall Detail



COMSLAB To Wall Detail



Concrete Floor To Wall Detail



Hambro Floor To Wall Detail



Dorchester Terrace Retirement Residence, Dorchester, ON

- Complete Cold-Formed Steel Wall Panels
- Total Building Area is 95853 sq.ft



Brianza Developments, Brampton, ON

- Two Adjoining Buildings/Roofs
- Building A – 4040 sq.ft of single slope trusses
- Building B – 7140 sq.ft



Burloak Water Treatment Plant, Oakville, ON

- Architectural truss pattern to simulate waves
- Large eavestrough built onto end of trusses



Mariner's Village, Point Edward, ON

- Two crane operations with multiple sections
- Transfer of section from one crane to other in midair



River Ridge II Winnipeg, MB

- 4-storey assisted-living facility of 180 suited with almost 200,000 sq.ft of floor space
- Axial load-bearing CFS modular walls and long-span CFS trusses
- Prefabrication shaved weeks off construction schedule



Dockside Waterfront Drive Halifax, NS

- 17,500 sq.ft of structural CFS trusses
- Waterfront condominiums situated in aggressive coastal environment
- Cold-formed steel ideal choice



McCauley Lodge Esquimalt, BC

- 5,000 sq.ft of structural CFS trusses over residential group home
- Prefabrication saved significant amount of time and labour



Place De La Gare Sainte-Therese, QC

- 12,500 sq.ft of structural cold-formed steel trusses
- Living space integrated into truss system



RCMP Detachment Building, Sylvan Lake, AB

- 16,000 sq.ft of parallel-chord cold-formed steel trusses
- Redesigned from traditional framing reducing construction schedule by weeks



Rotary Manor, Dawson Creek, BC

- 20,000 sq.ft of structural cold-formed steel trusses
- Pre-fabricated elements a perfect choice for extreme weather location
- Structure water-tight quickly to allow interior trades to work in inclement weather



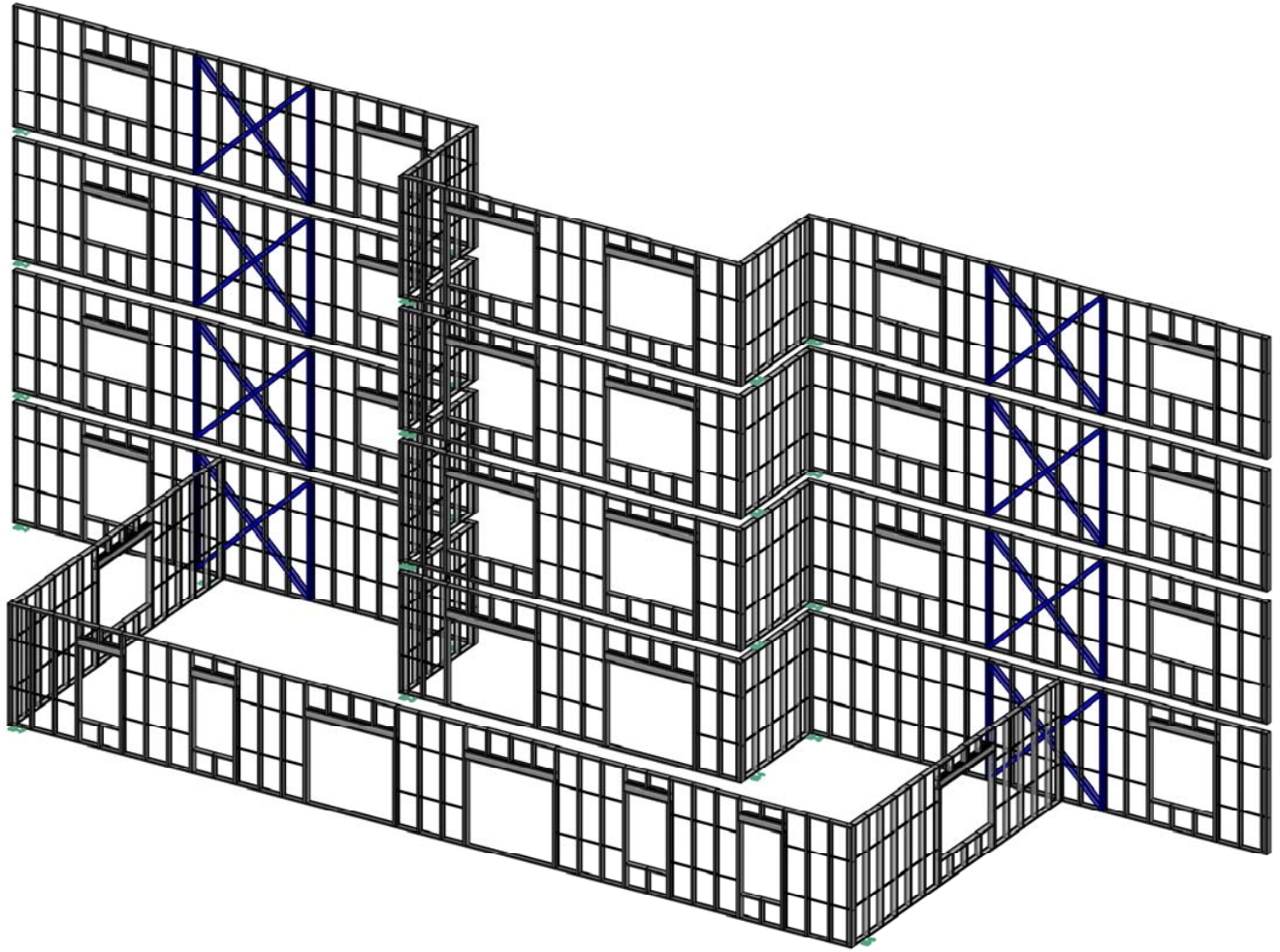
Moncton Casino – Moncton, NB

- \$90 million casino and multi-use resort complex
- CFS trusses over 20,000 sq.ft of gaming space
- A 128 room hotel and a 1,500 seat palladium/conference centre

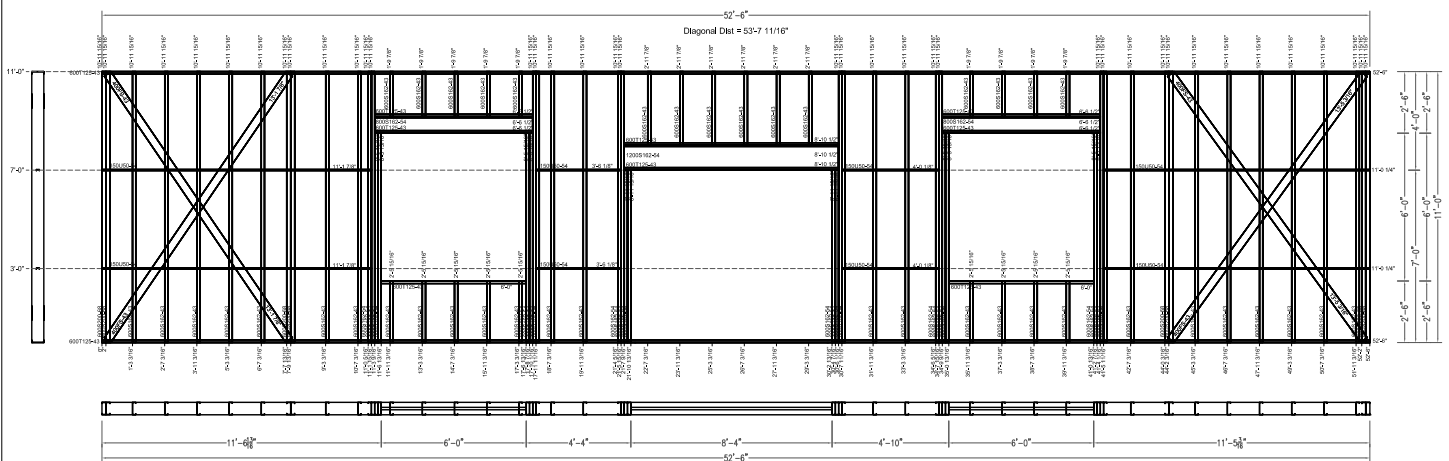


Motel 6 – Niagara Falls, ON

- 39,700 sq.ft of structural cold-formed steel trusses
- Quickly and successfully erected by local installation crew
- Sloped roof integrates structure with the existing neighbourhood



PRE-ENGINEERED AND PREFABRICATED WALL AND FLOOR PANEL PACKAGES, COMPREHENSIVELY DESIGNED AND FULLY ENGINEERED.



Design:

JV

Scale:

N/A

Location:

**Panelized Wall
Detail**

Standard

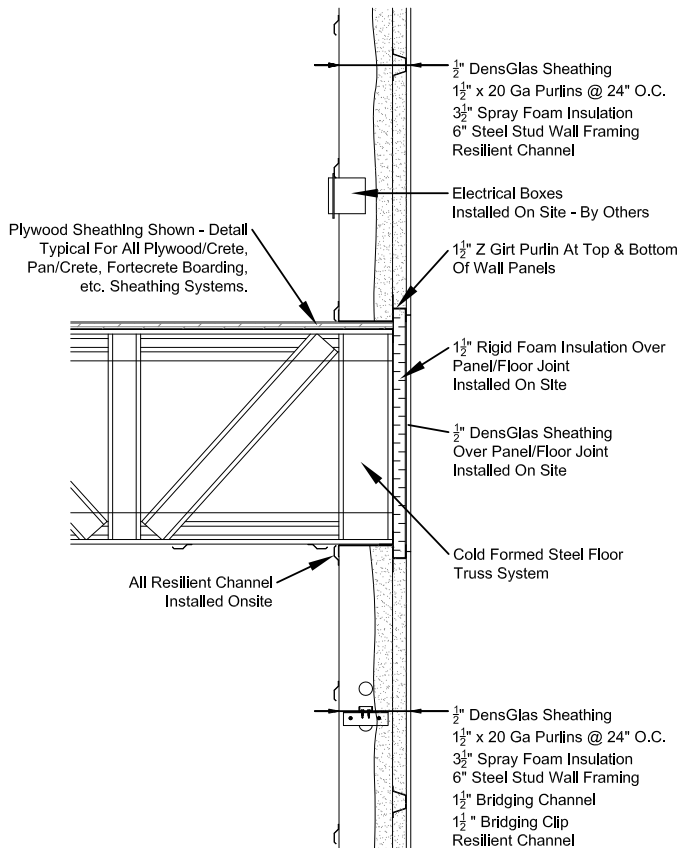
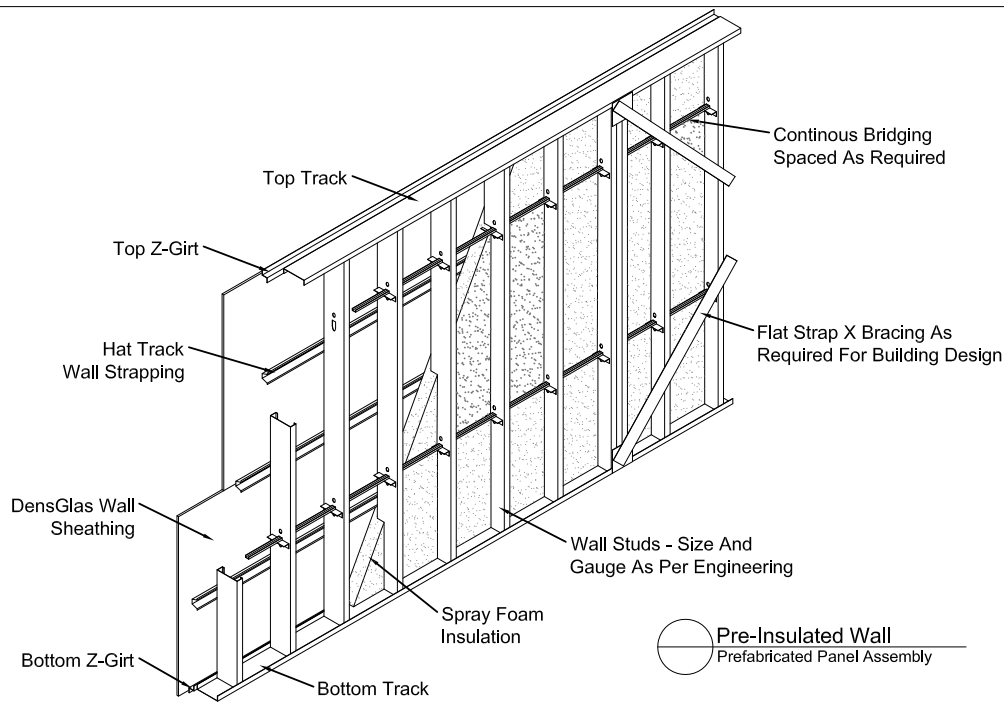
Phone: 1-877-251-6875

Fax: 1-866-873-0360

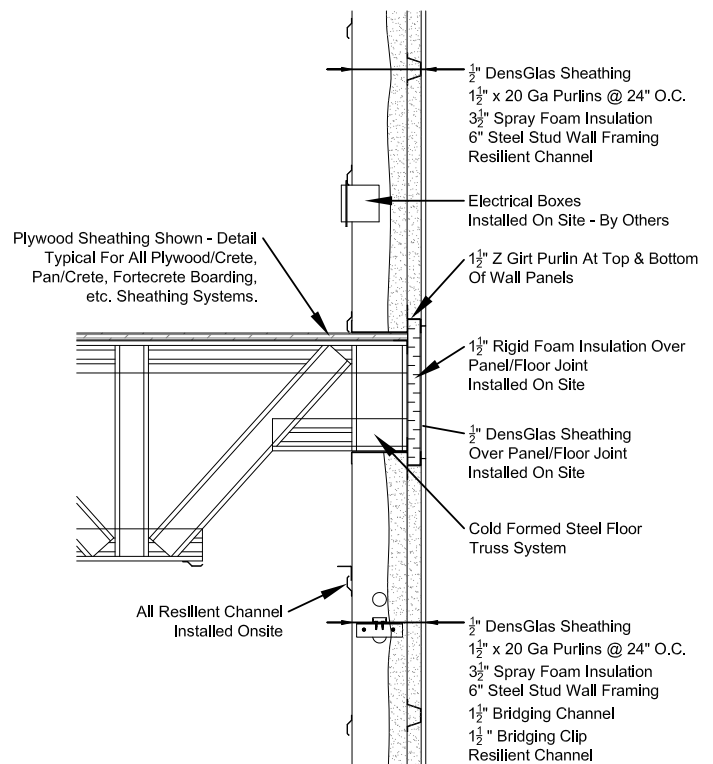
info@trusses.ca

www.trusses.ca





CFS Floor Truss
Floor To Wall Detail
(Bottom Chord Bearing Detail)



CFS Floor Truss
Floor To Wall Detail
(Top Chord Bearing Detail)

Design: **JV**

Scale: **N/A**

Location:

Typical Wall & Floor Systems

Standard

Phone: 1-877-251-6875
Fax: 1-866-873-0360
info@trusses.ca
www.trusses.ca



Depth
Lip
Flange

Member Depth,
in 1/100ths inches.
Thus, 600 means $600/100 = 6"$
[152.4 mm]

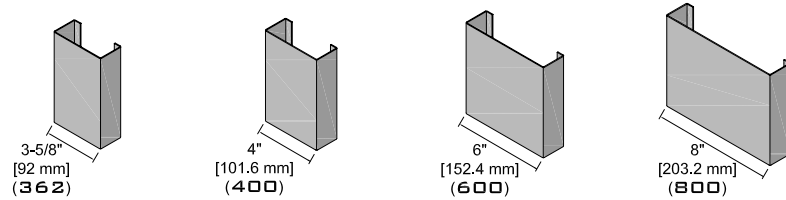
Flange width,
in 1/100ths inches.
Thus, 162 means $162/100 = 1.62"$ or 1-5/8"
[41.28 mm]

600 S 162 - 54

Style:
S - Stud or Joist Sections
T - Track Sections
U - Channel Sections
F - Furring Channel Sections

Material thickness,
in 1/1000ths inches.
Thus, 54 means $54/1000 = 0.054"$

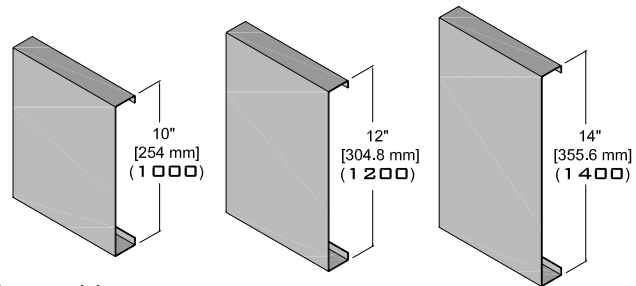
This product designator is independent of units. For example, 600S162-54 applies whether Imperial or Metric units are used.



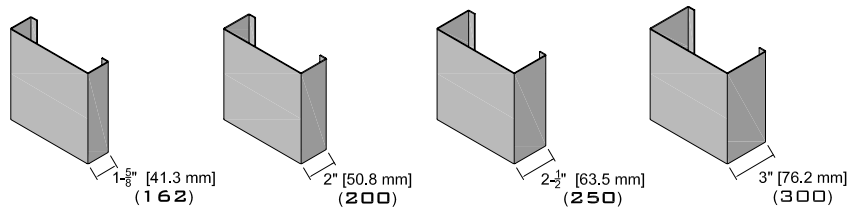
STUD MEMBER DEPTHS

OPTIONAL KNOCKOUTS:

FOR SERVICES
(ELECT / MECH, ETC)
AND BRIDGING CHANNEL.
TYPICALLY SPACED
AT 24" (610 MM) O/C
VERTICALLY.



JOIST MEMBER DEPTHS



FLANGE WIDTHS

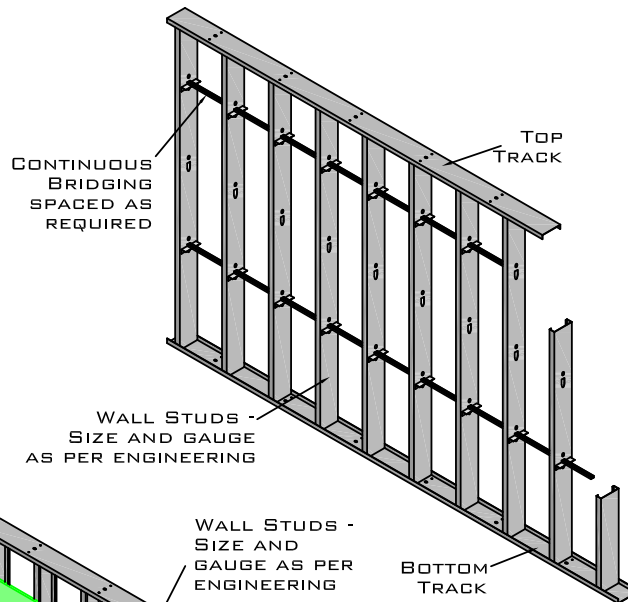
600S162-54
SAMPLE STUD MEMBER

GAUGE	MATERIAL THICKNESS	DESIGN THICKNESS	
		(MM)	(IN)
20	33	0.912	0.0359
18	43	1.214	0.0478
16	54	1.519	0.0598
14	68	1.897	0.0747
12	97	2.657	0.1046

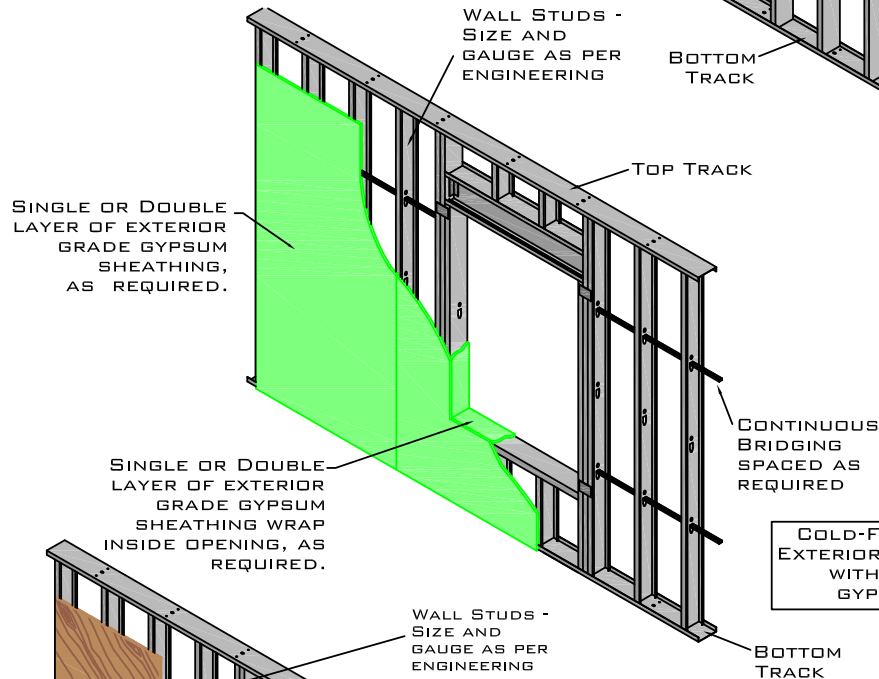
P: 1-877-251-6875
F: 1-866-873-0360
INFO@TRUSSES.CA



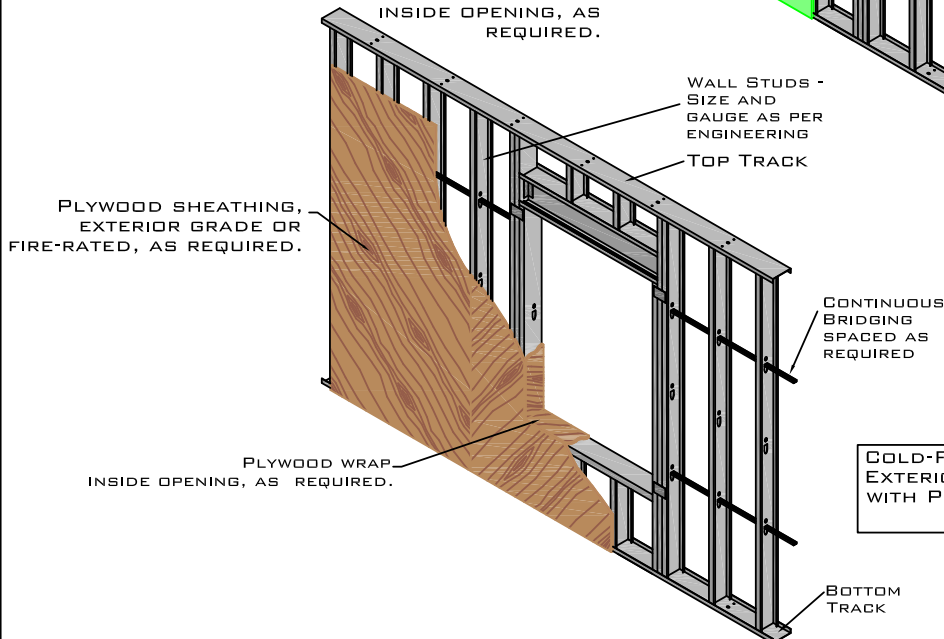
**CFS
STUD MEMBERS:
NOMENCLATURE
AND SIZES**



COLD-FORMED STEEL STUD INTERIOR LOAD BEARING WALL.



COLD-FORMED STEEL STUD EXTERIOR LOAD-BEARING WALL WITH EXTERIOR GRADE GYPSUM SHEATHING.



COLD-FORMED STEEL STUD EXTERIOR LOAD-BEARING WALL WITH PLYWOOD SHEATHING.

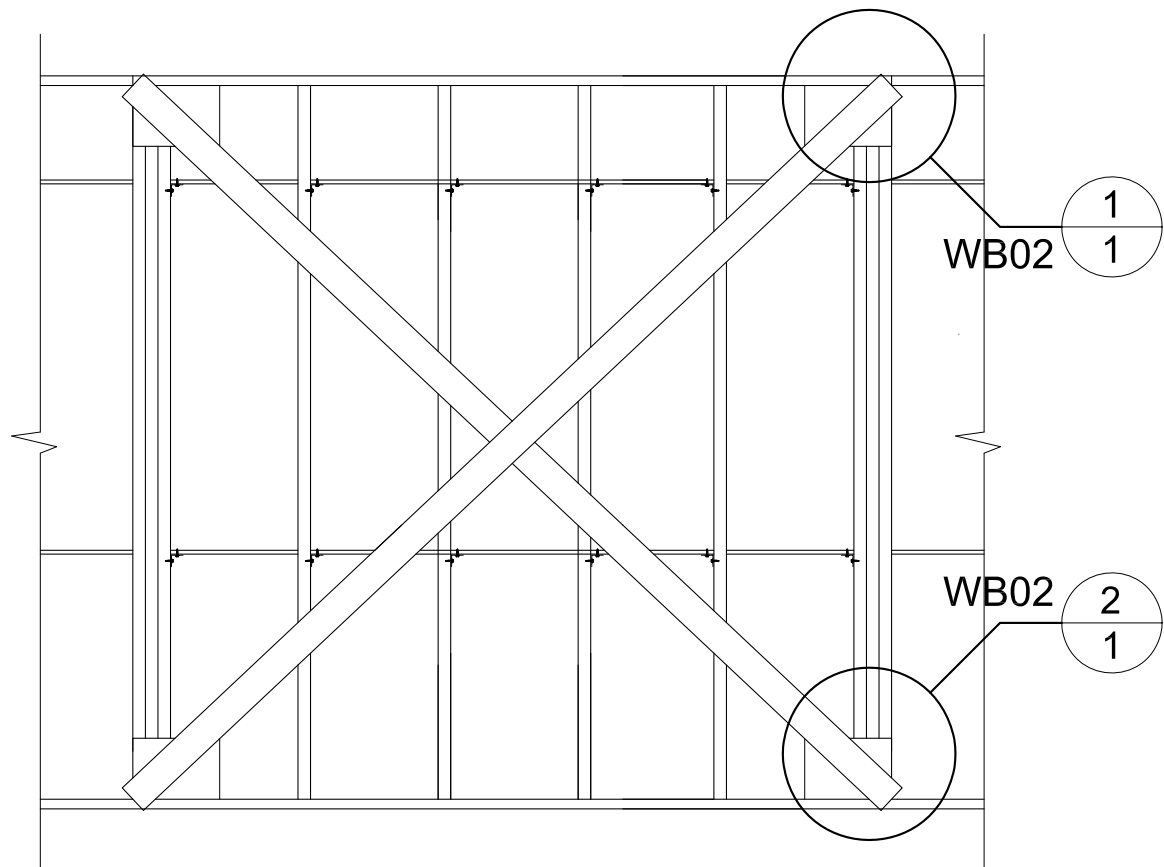
Designs: **EL**
Scale: **N/A**

TYPICAL CFS WALL FRAMING & SHEATHING

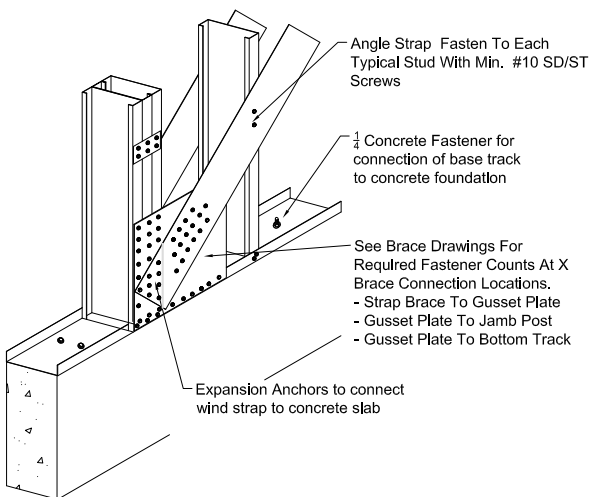
Location: **STANDARD**

Phone: 1-877-251-6875
Fax: 1-866-873-0360
info@trusses.ca
www.trusses.ca

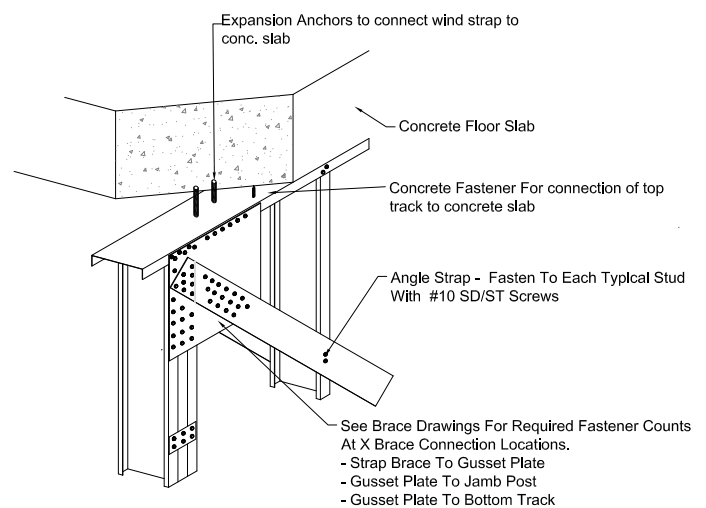




Wall Panel Assembly Detail
Partial Elevation



2
1 Shear Brace Lower
Connection Detail



1
1 Shear Brace Upper
Connection detail

Design:

JV

Scale:

N/A

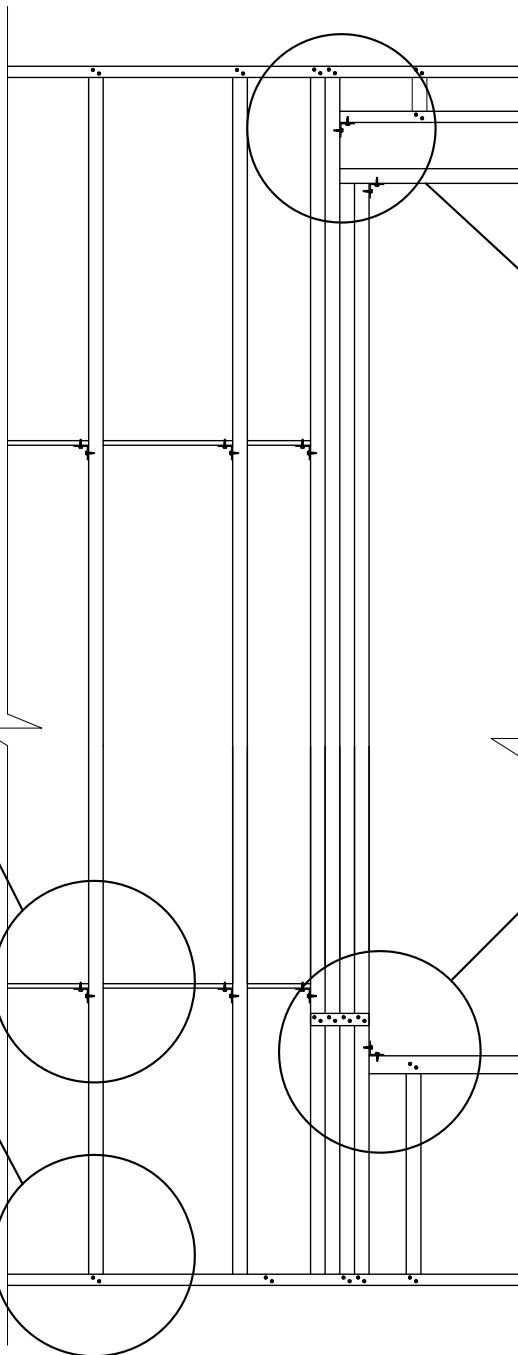
Location:

Standard

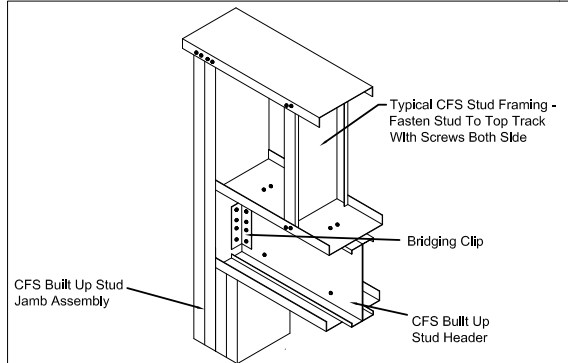
Typical Wall System Details

Phone: 1-877-251-6875
Fax: 1-866-873-0360
info@trusses.ca
www.trusses.ca

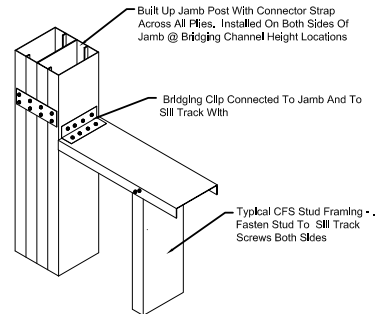




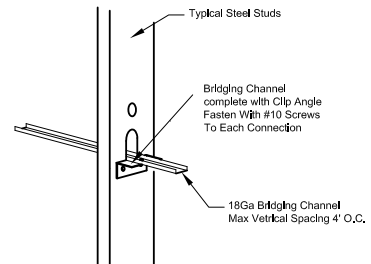
Typical LB Wall Panel
Partial Elevation



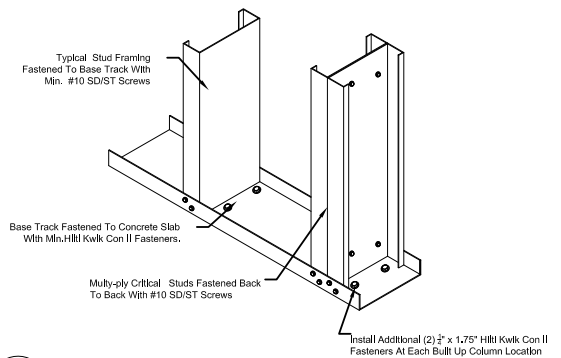
4
1 Interior Header To Jamb
Connection Detail



3
1 Lower Sill To Jamb
Connection Detail



2
1 Bridging Detail
Connection Detail



1
1 Base Of Stud
Connection Detail

Design: **JV**

Scale: **N/A**

Location: **Standard**

Typical Wall System Details

Phone: 1-877-251-6875
Fax: 1-866-873-0360
info@trusses.ca
www.trusses.ca



Compatible Floor Systems



Hambro Composite Floor System



Precast Concrete Hollow Core Slab



SPECIALIST IN COLD-FORMED STEEL CONSTRUCTION

Quality • Integrity • Design • Fabricate • Delivery • Experience
Combined 50+ years of excellence...and counting.

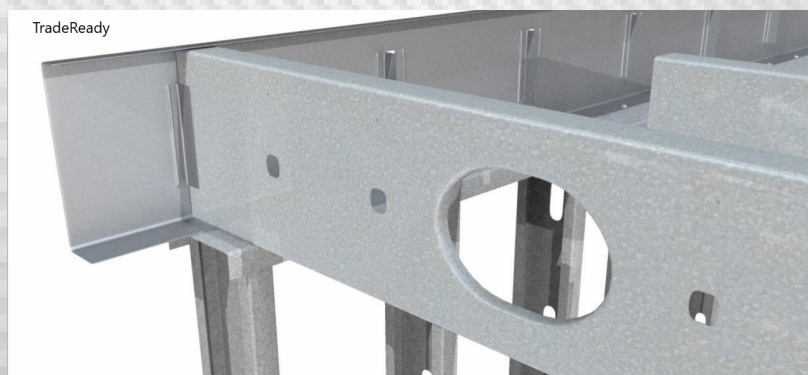
Compatible Floor Systems



C-Joist



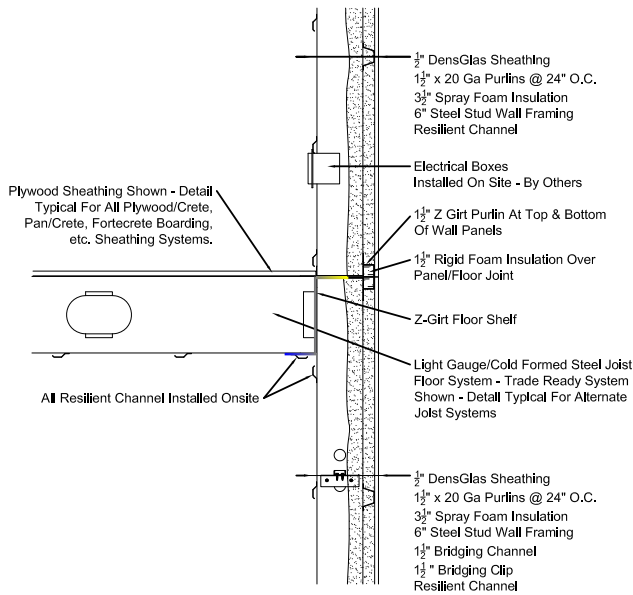
MegaJoist



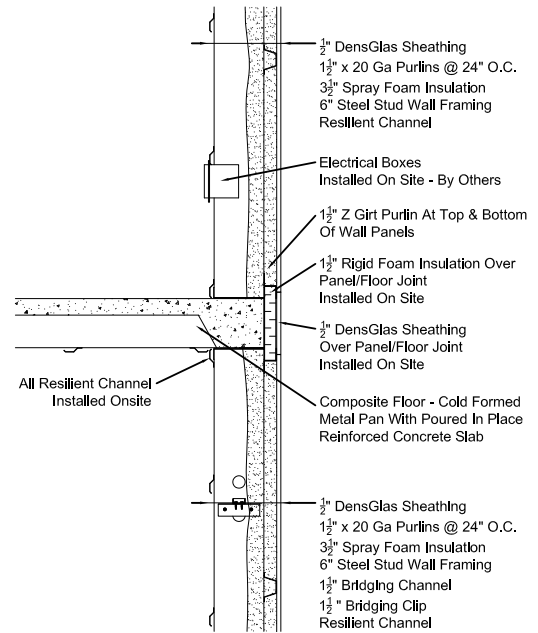
TradeReady

SPECIALIST IN COLD-FORMED STEEL CONSTRUCTION

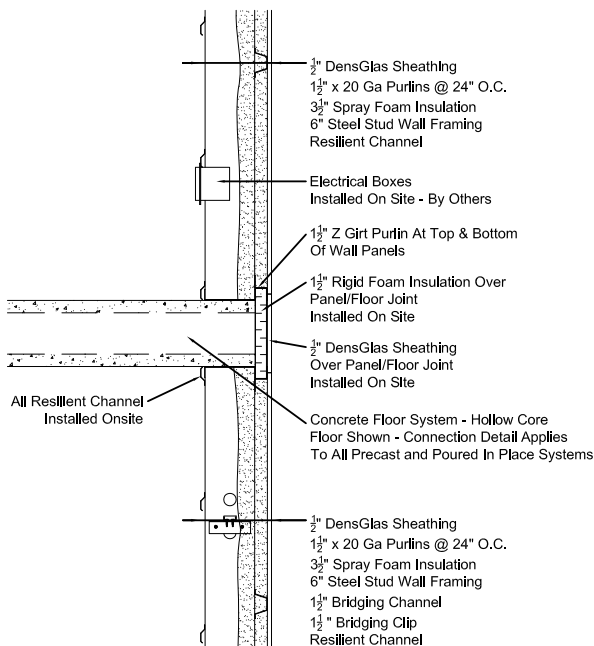
Quality • Integrity • Design • Fabricate • Delivery • Experience
Combined 50+ years of excellence...and counting.



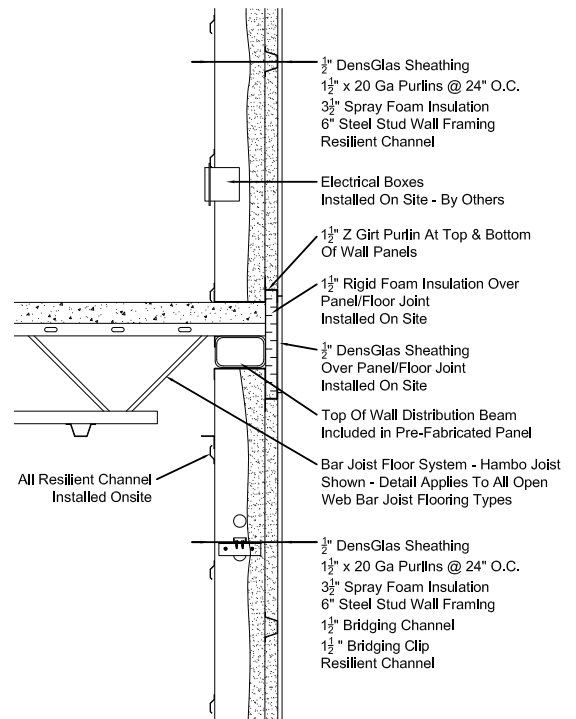
 **CFS Joist**
Floor To Wall Detail



 **CFS Pan**
Floor To Wall Detail



 **Concrete Floor**
Floor To Wall Detail



 **Open Web Steel Joist**
Floor To Wall Detail

Design:

JV

Scale:

N/A

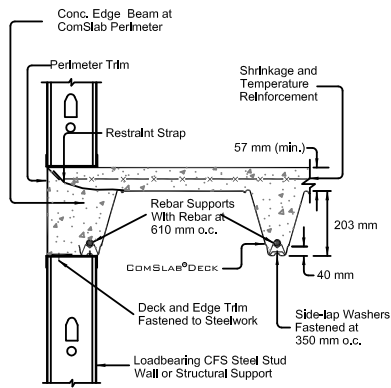
Location:

Typical Floor Systems

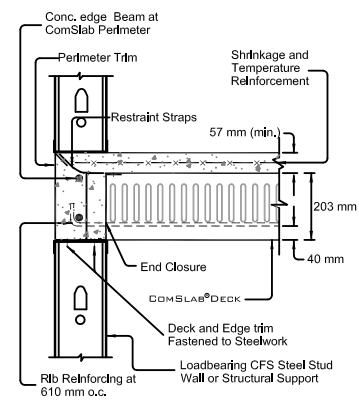
Standard

Phone: 1-877-251-6875
Fax: 1-866-873-0360
info@trusses.ca
www.trusses.ca

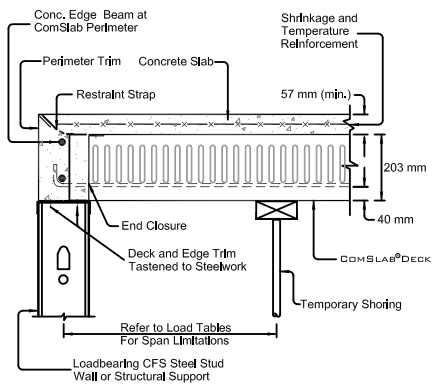




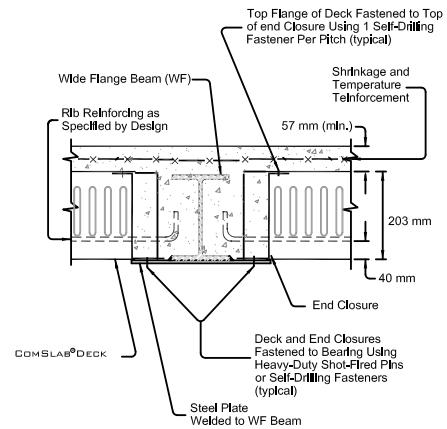
COMPOSITE PAN EDGE
Bearing Detail



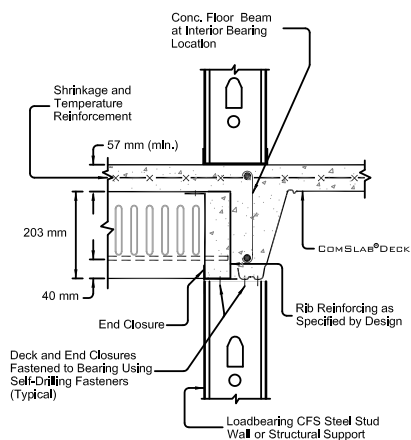
COMPOSITE PAN END
Bearing Detail



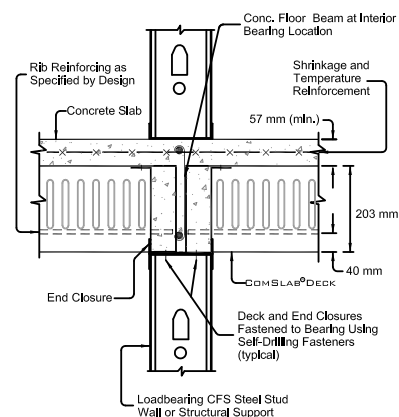
TYPICAL FLOOR BEARING
Installation Detail



WIDE FLANGE BEAM
Bearing Detail



SLAB DIRECTION CHANGE
Interior Bearing Detail



TYPICAL CONNECTION
Interior Bearing Detail

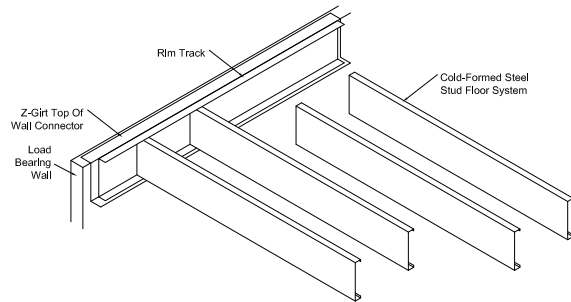
BAILEY[®]
METAL PRODUCTS LIMITED

**ComSlab[®] Floor
System**

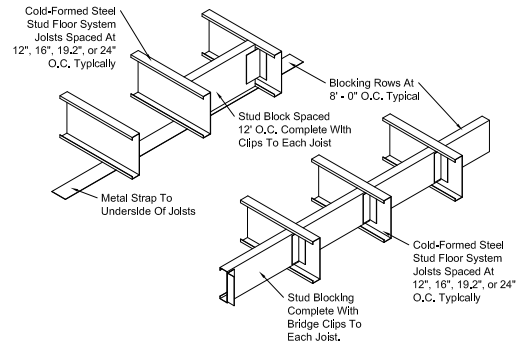
www.bmp-group.com

Phone: 1-877-251-6875
Fax: 1-866-873-0360
info@trusses.ca
www.trusses.ca

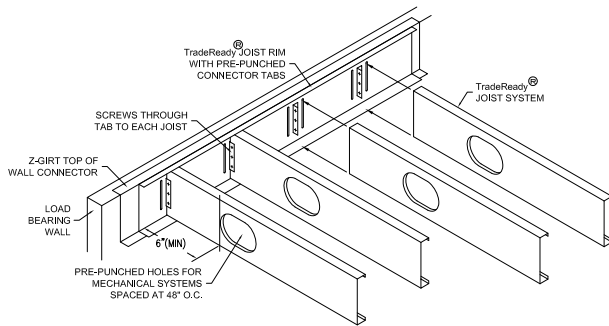
VANDERWAL
HOMES & COMMERCIAL GROUP



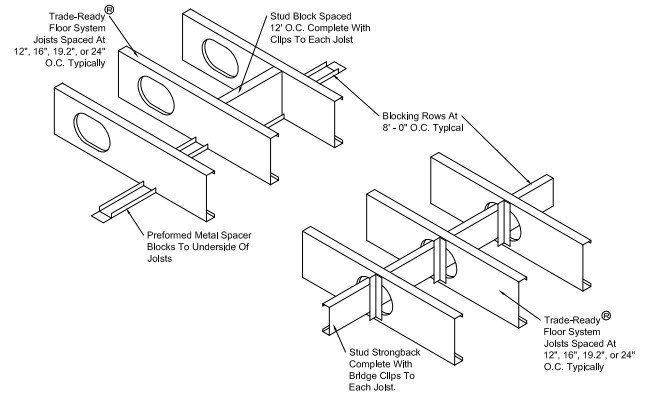
CFS Stud Floor Systems
Typical Bearing Detail



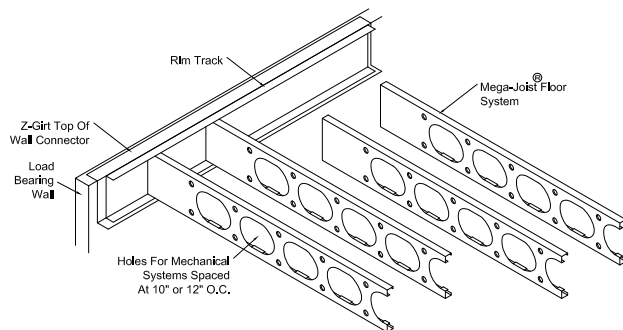
CFS Stud Floor System
Typical Blocking Detail



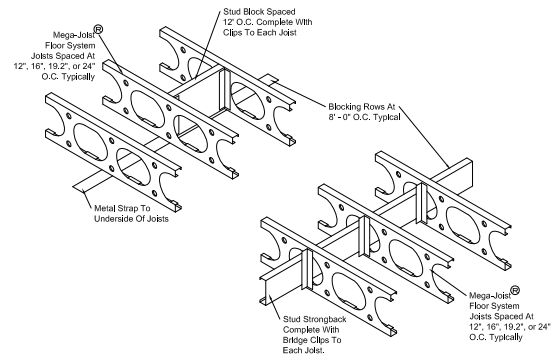
Trade-Ready Floor System
Typical Bearing Detail



Trade-Ready Floor System
Typical Blocking Detail



Mega-Joist Floor System
Typical Bearing Detail



Mega-Joist Floor System
Typical Blocking Detail

Design:

JV

Scale:

N/A

Location:

CFS Joist Floor Systems

Standard

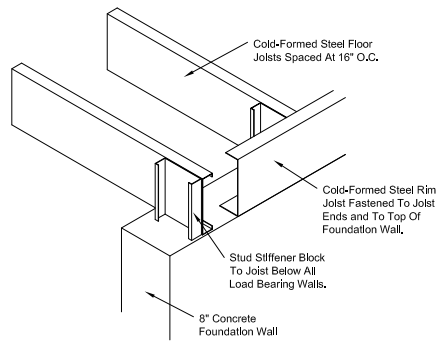
Phone: 1-877-251-6875

Fax: 1-866-873-0360

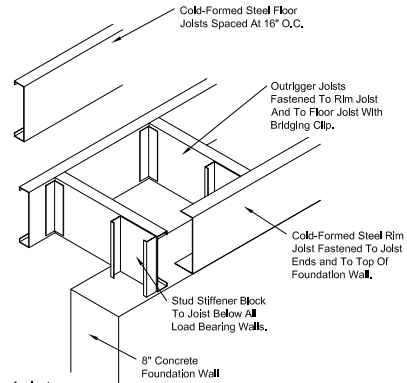
info@trusses.ca

www.trusses.ca

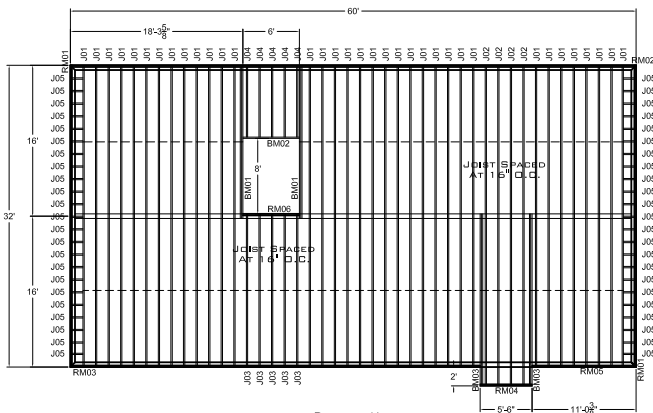




**Floor Joist Over
Foundation wall**

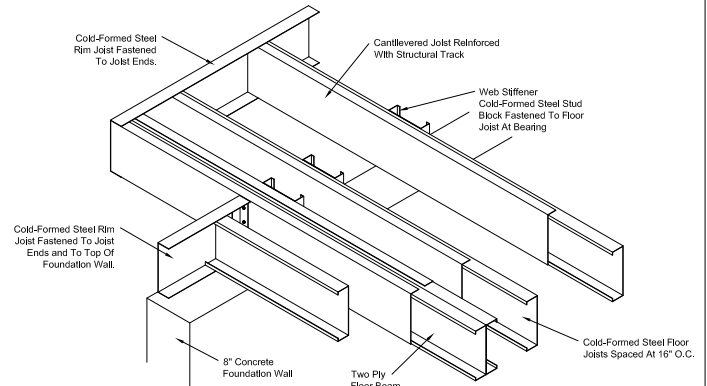


**Outrigger Joist
Floor Detail**

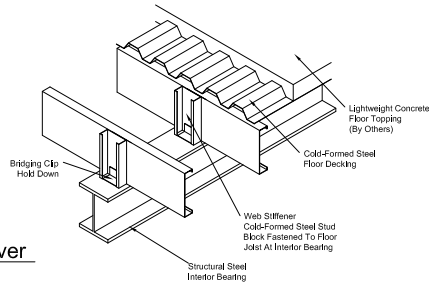


**Joist Layout
N.T.S**

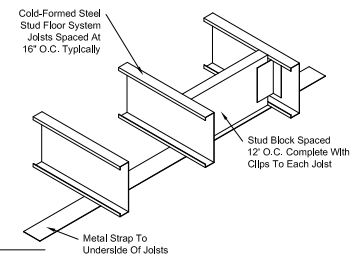
DRAWING NOTES:
 --- BLOCKING LOCATIONS
 ALL JOIST DIMENSIONS IS
 APPROXIMATE. INSTALLER TO
 VERIFY ALL DIMENSIONS ON
 SITE PRIOR TO INSTALLING
 TRUSSES



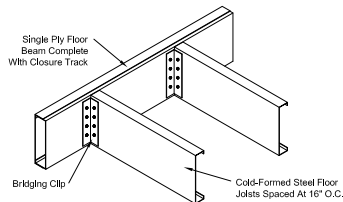
**Cantilevered Joist
Floor Detail**



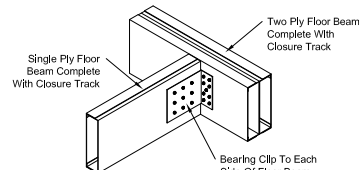
**Floor Joist Over
Interior Bearing**



**Floor Joist
Blocking Detail**



**Floor Joist To Beam
Detail Connection**



**Floor Beam To Floor Beam
Detail Connection**

Designs: **JV**

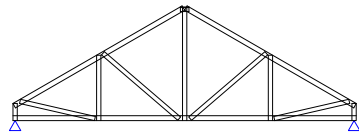
Scale: **N/A**

Locations: **Standard**

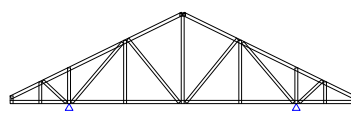
CFS Floor Details

Phone: 1-877-251-6875
 Fax: 1-866-873-0360
 info@trusses.ca
 www.trusses.ca

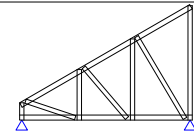




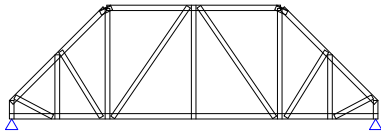
Clearspan Truss



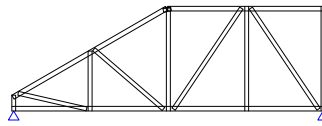
Cantilever Truss



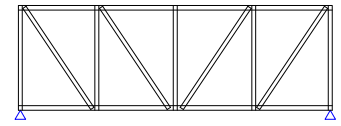
Mono-Slope Truss



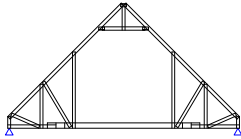
Hip Truss



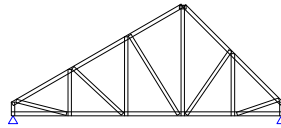
Half Hip Truss



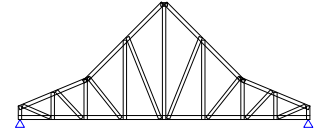
Flat Truss



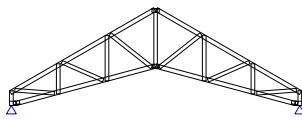
Attic Truss



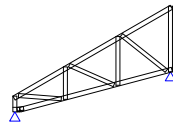
Dual Pitch Truss



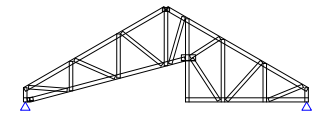
Dual Slope Truss



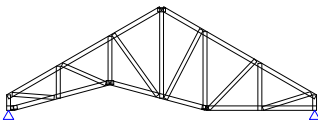
Scissor Truss



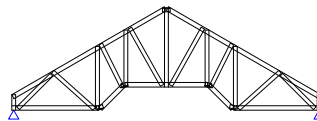
Half Scissor Truss



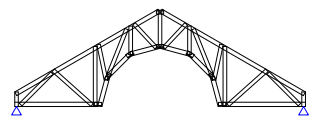
Studio Vaulted Truss



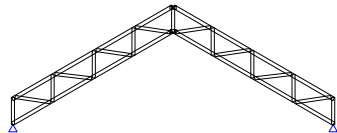
Vaulted Ceiling Truss



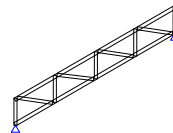
Tray Ceiling Truss



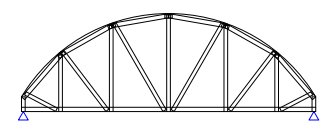
Barrel Vaulted Truss



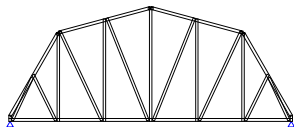
Parallel Chord Truss



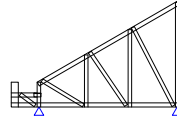
Sloping Flat Truss



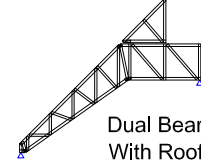
Bowstring Truss



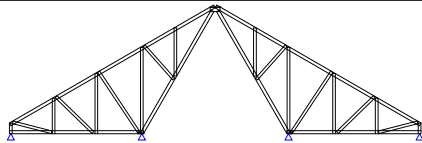
Gambrel Truss



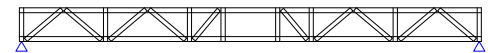
Trough Truss



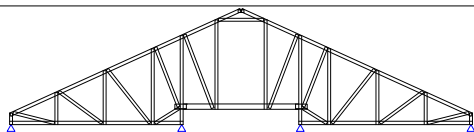
Dual Bearing Heights
With Roof Top Mechanical



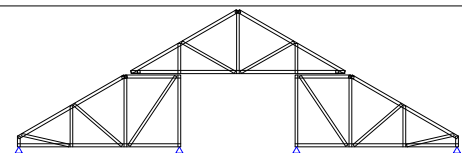
Double Inverted Truss



Floor Truss



Bottom Chord Step Up With Mechanical Walkway



Stacked Truss Assembly

Drawn:

JV

Scale:

N/A

Location:

Standard

**Standard Truss
Configurations**

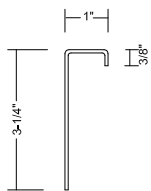
Phone: 1-877-251-6875
Fax: 1-866-873-0360
info@trusses.ca
www.trusses.ca



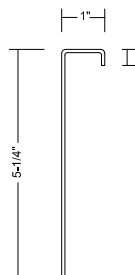
ULTRA-SPAN[®] PROFILE

USC/USW/USJ/USZ

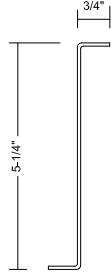
325USJ Connector



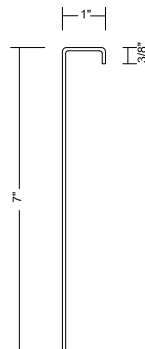
525USJ Connector



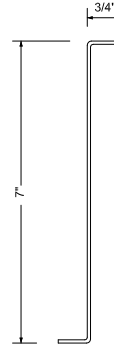
525USZ Connector



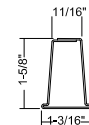
7USJ Connector



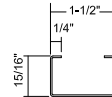
7USZ Connector



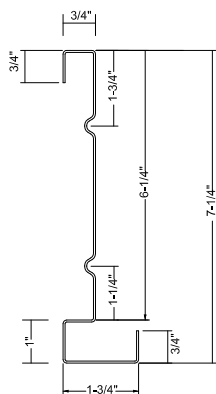
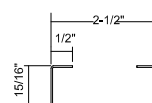
UST Web Brace



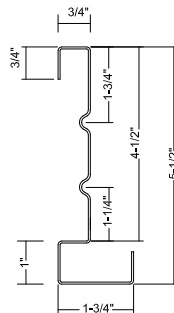
15USW Web



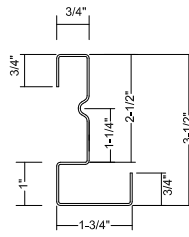
25USW Web



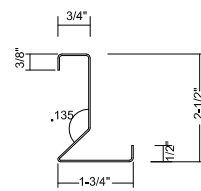
725USC Chord



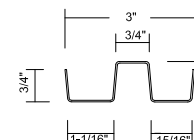
55USC Chord



35USC Chord



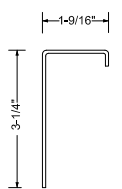
25USC Chord



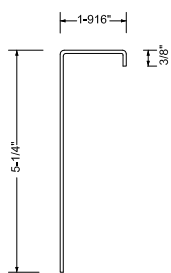
30USW Web

ULTRA-SPAN[®] DELUXE PROFILE - USD/USWD/USJD/USZD

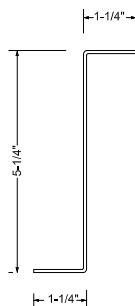
325USJD Connector



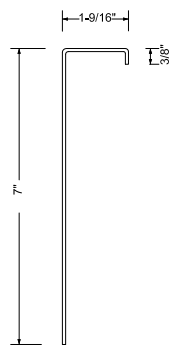
525USJD Connector



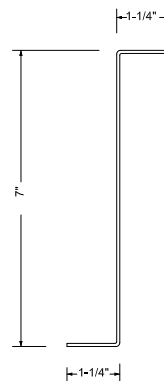
525USZD Connector



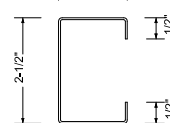
70USJD Connector



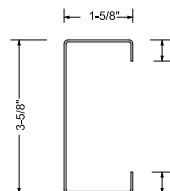
70USZD Connector



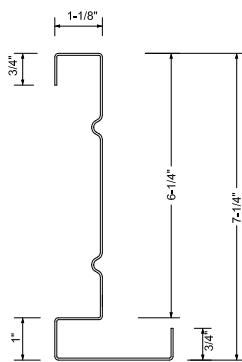
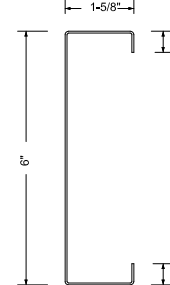
25USWD Web



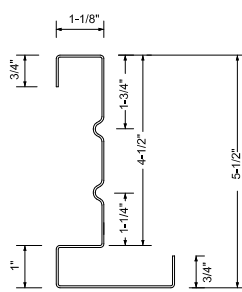
362USWD Web



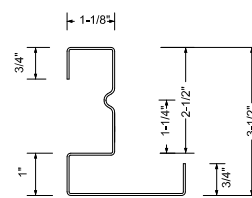
60USWD Web



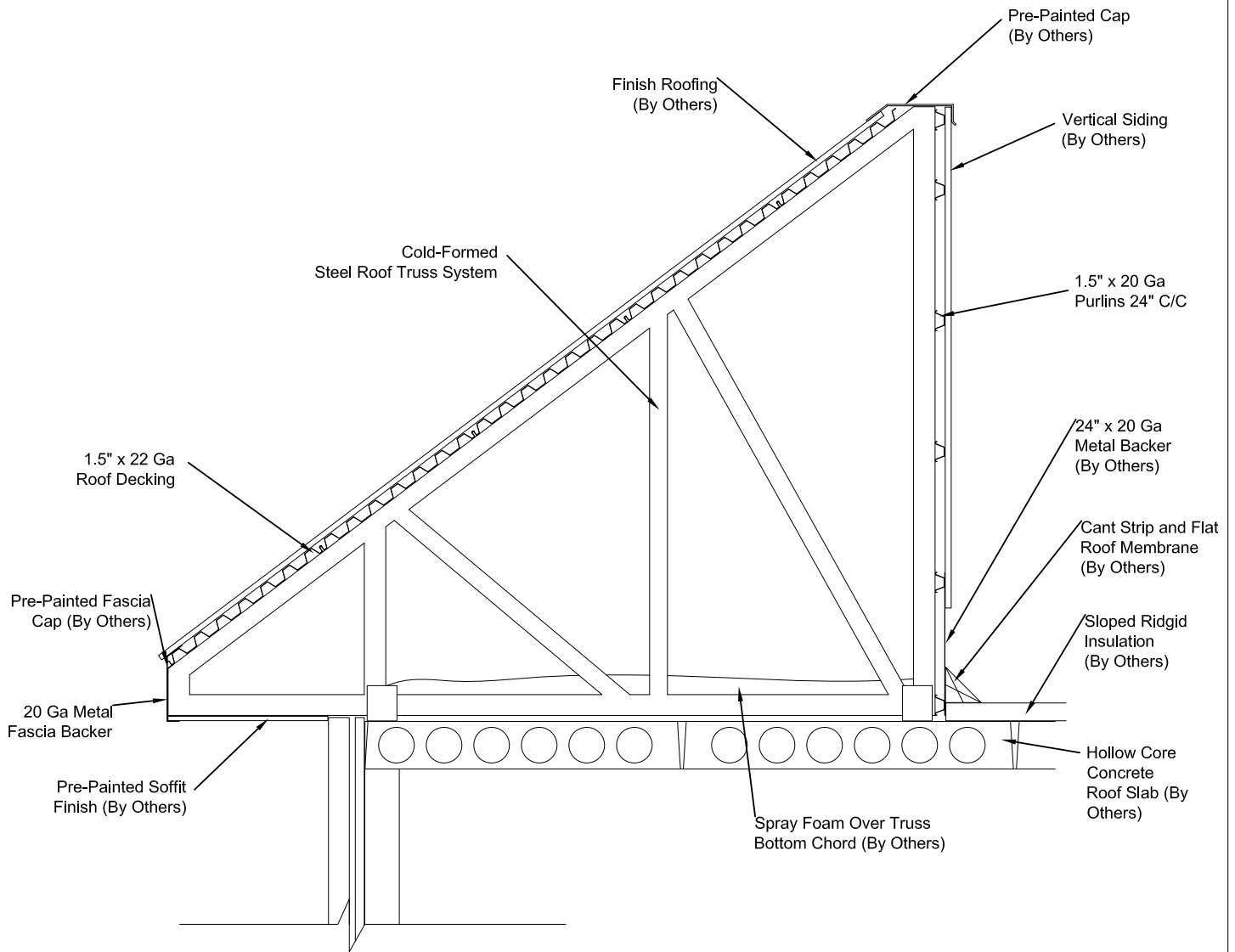
725USD Chord



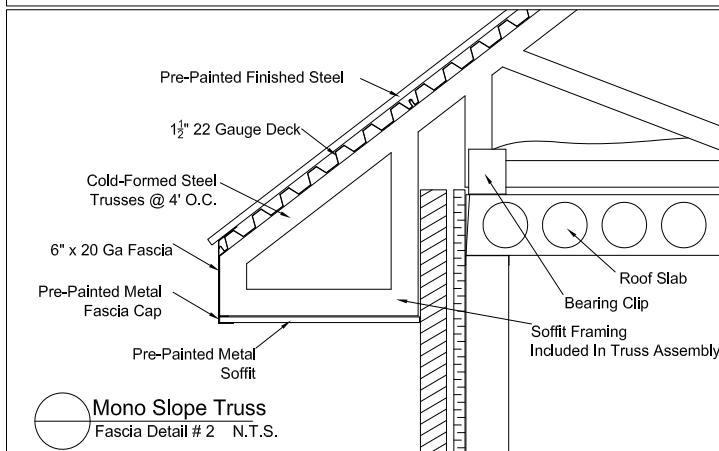
55USD Chord



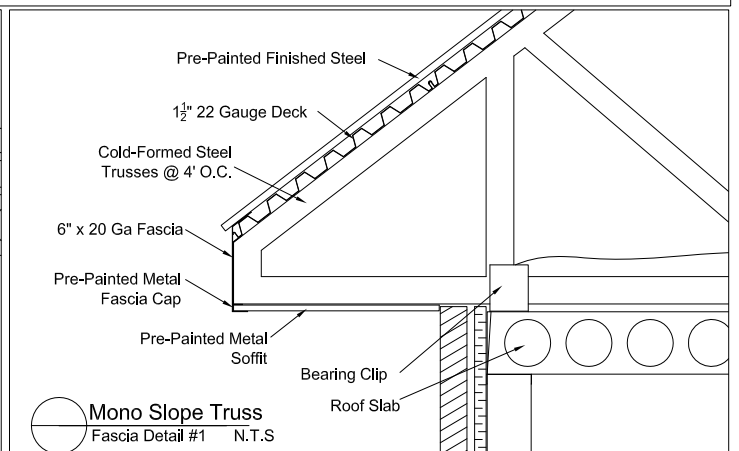
35USD Chord



 Mono Slope Truss
Standard Detail N.T.S.



 Mono Slope Truss
Fascia Detail #2 N.T.S.



 Mono Slope Truss
Fascia Detail #1 N.T.S.

Designer:

JV

Scale:

N/A

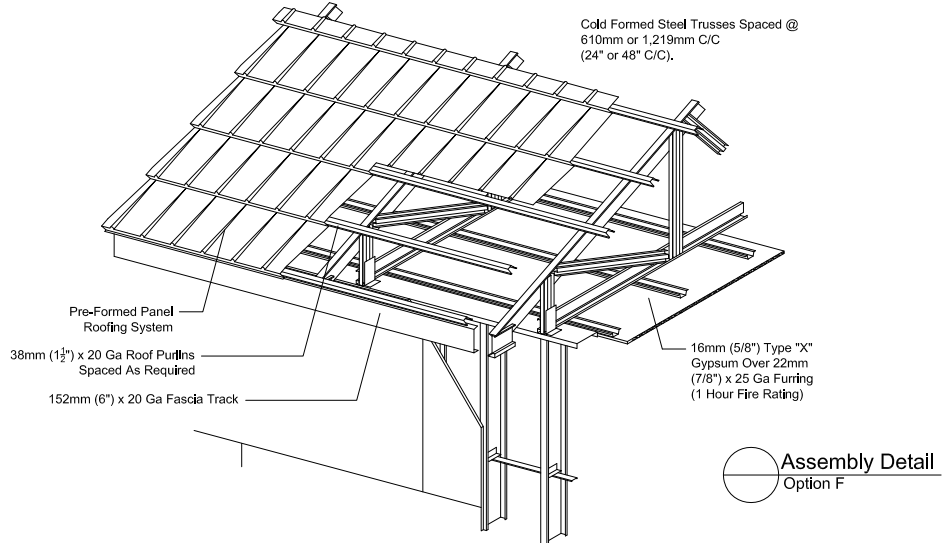
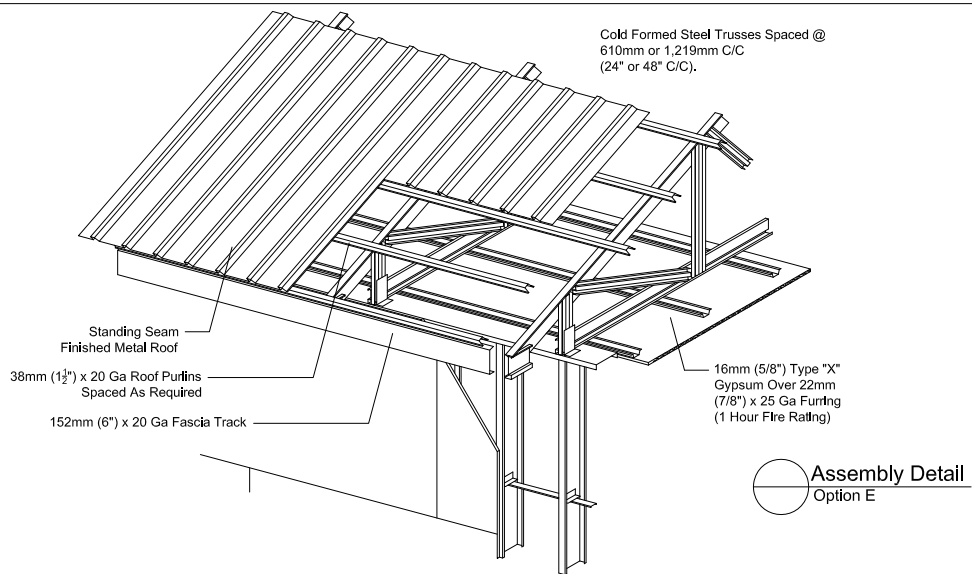
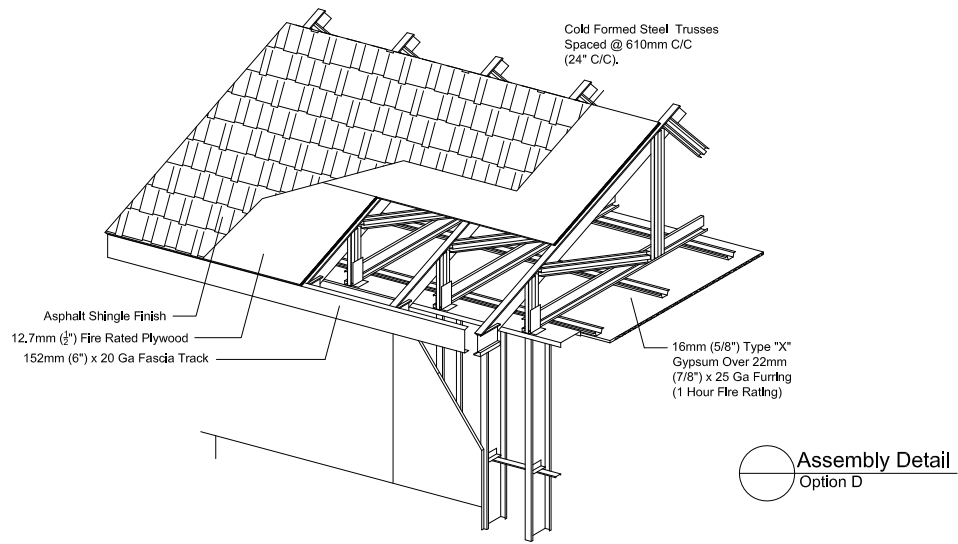
Location:

Standard

**Roofing Assembly
Standard Detail**

Phone: 1-877-251-6875
Fax: 1-866-873-0360
info@trusses.ca
www.trusses.ca





Designs: **JV**

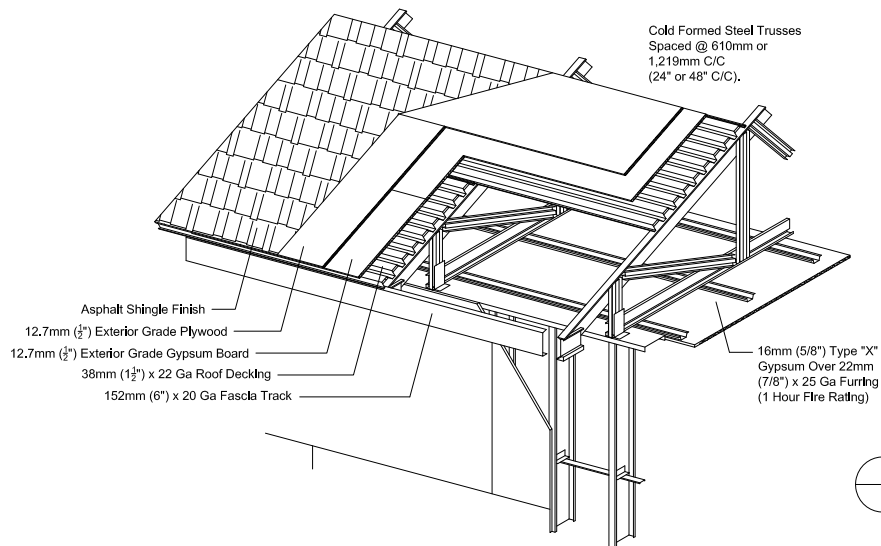
Scale: **N/A**

Location: **Standard**

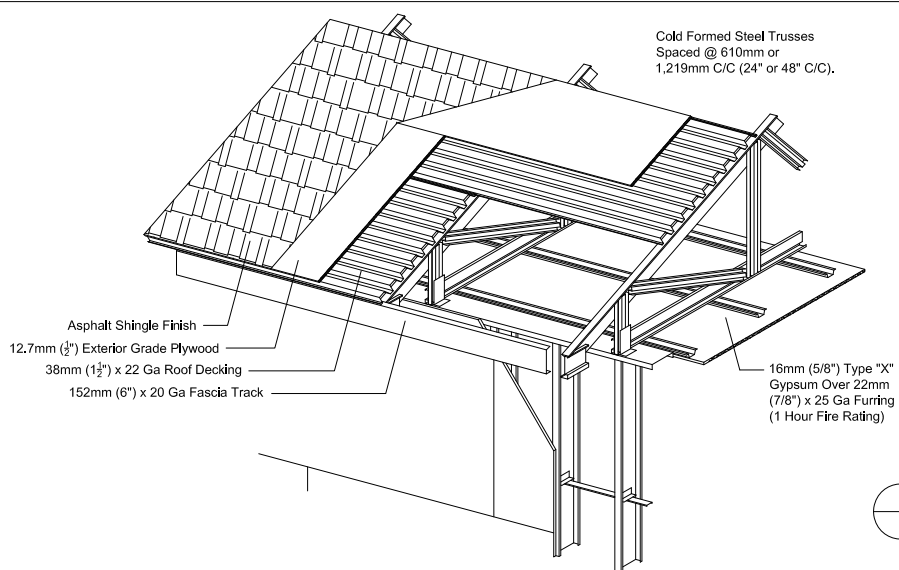
Roofing Assembly Standard Detail

Phone: 1-877-251-6875
Fax: 1-866-873-0360
info@trusses.ca
www.trusses.ca

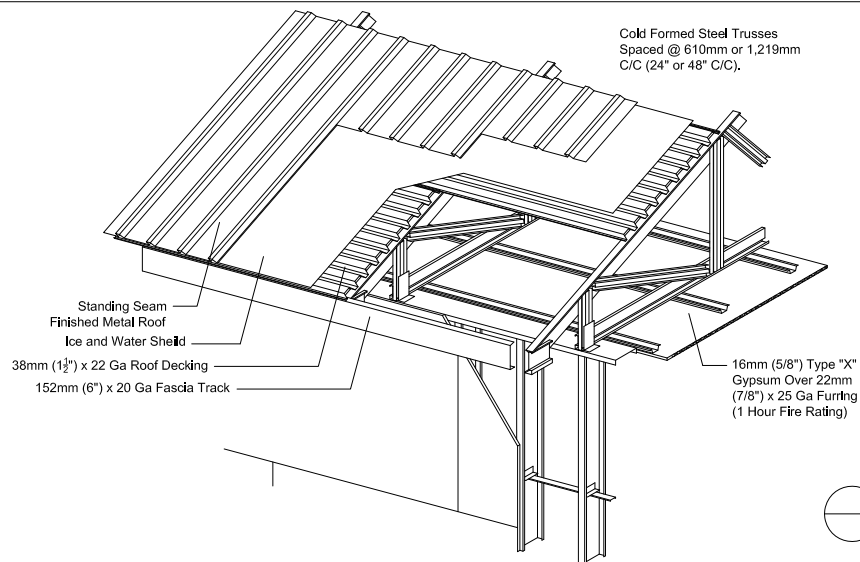




Assembly Detail
Option A



Assembly Detail
Option B



Assembly Detail
Option C

Design:

JV

Scale:

N/A

Location:

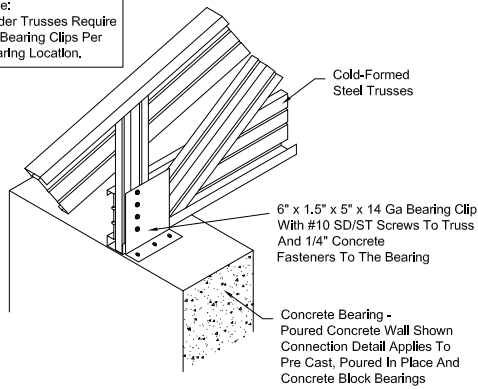
Standard

Roofing Assembly Standard Detail

Phone: 1-877-251-6875
Fax: 1-866-873-0360
info@trusses.ca
www.trusses.ca

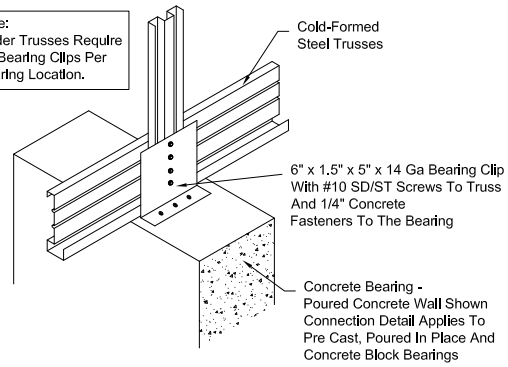


Note:
Girder Trusses Require
(2) Bearing Clips Per
Bearing Location.

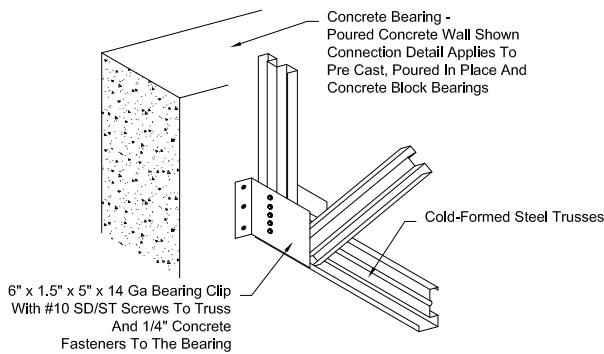


**Truss To Concrete
Bearing Detail**
Exterior Concrete Bearing Wall Connection

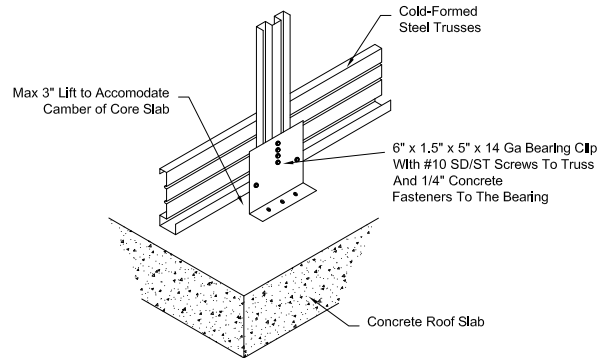
Note:
Girder Trusses Require
(2) Bearing Clips Per
Bearing Location.



**Truss To Concrete
Bearing Detail**
Interior Concrete Bearing Wall Connection

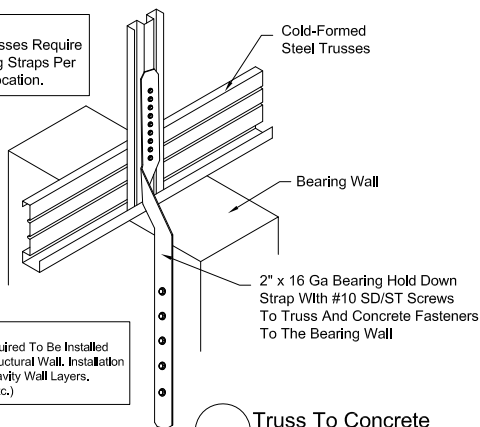


**Truss To Concrete
Bearing Detail**
Connection To Vertical Wall Face



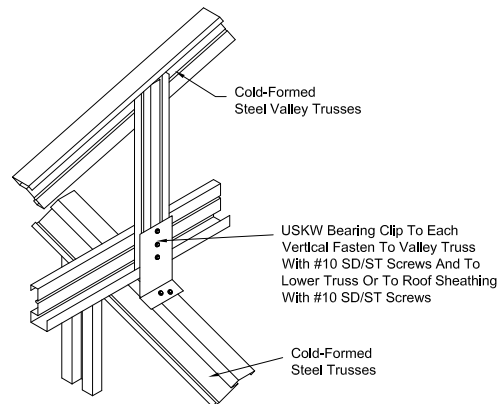
**Truss To Concrete
Bearing Detail**
Standing Clip Connection Detail

Note:
Girder Trusses Require
(2) Bearing Straps Per
Bearing Location.



NOTE:
Hold Down Straps Required To Be Installed
To Exterior Face of Structural Wall. Installation
Must Occur Prior To Cavity Wall Layers,
(IE, Brick, Insulation, Etc.)

**Truss To Concrete
Bearing Detail**
Hold Down Strap Connection Detail



**Truss To Concrete
Bearing Detail**
Valley Overframing Connection Detail

Design:

JV

Scale:

N/A

Location:

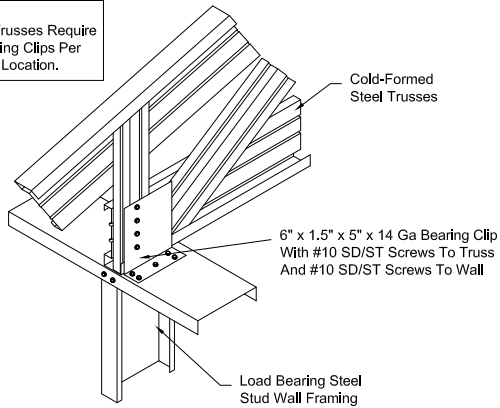
Standard

**Standard
Connection Details**

Phone: 1-877-251-6875
Fax: 1-866-873-0360
info@trusses.ca
www.trusses.ca

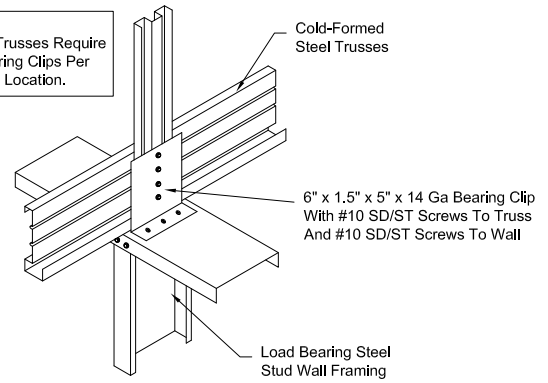


Note:
Girder Trusses Require
(2) Bearing Clips Per
Bearing Location.

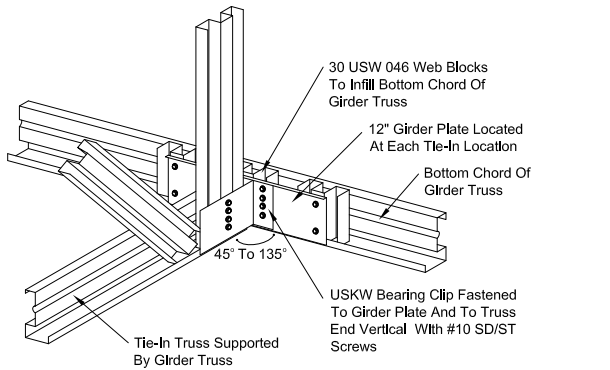


Truss To Wall
Bearing Detail
Exterior Bearing Wall Connection

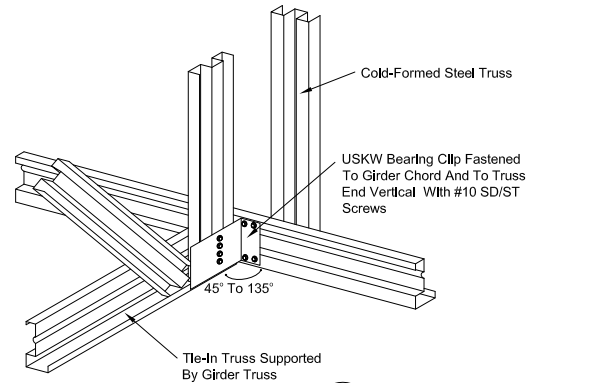
Note:
Girder Trusses Require
(2) Bearing Clips Per
Bearing Location.



Truss To Wall
Bearing Detail
Interior Bearing Wall Connection

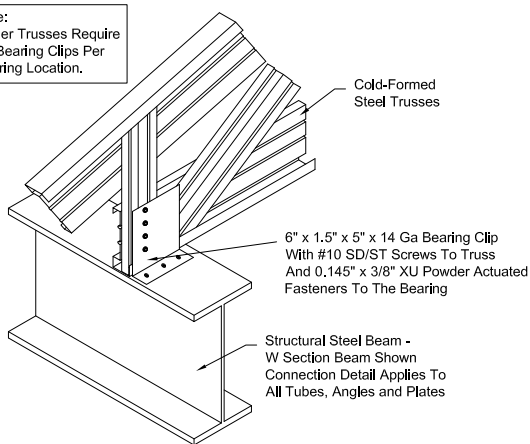


Truss To Girder
Connection Detail
Connection To Front Face Of Girder Truss



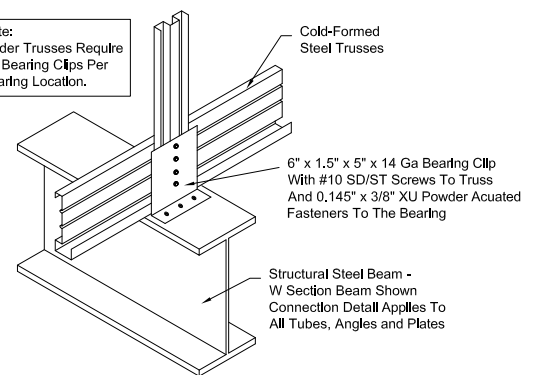
Truss To Girder
Connection Detail
Connection To Back Face Of Girder Truss

Note:
Girder Trusses Require
(2) Bearing Clips Per
Bearing Location.



Truss To Structural
Steel Bearing Detail
Structural Beam At Building Exterior

Note:
Girder Trusses Require
(2) Bearing Clips Per
Bearing Location.



Truss To Structural
Steel Bearing Detail
Structural Beam At Building Interior

Design:

JV

Scale:

N/A

Location:

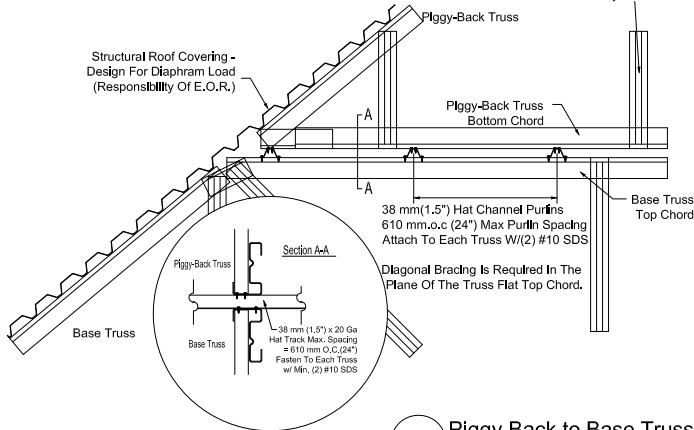
Standard

**Standard
Connection Details**

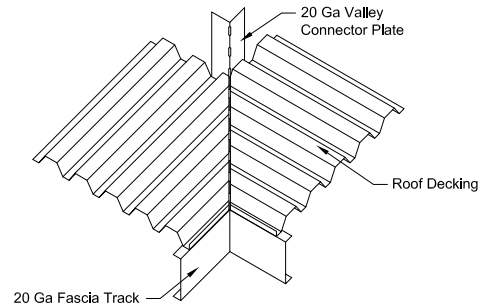
Phone: 1-877-251-6875
Fax: 1-866-873-0360
info@trusses.ca
www.trusses.ca



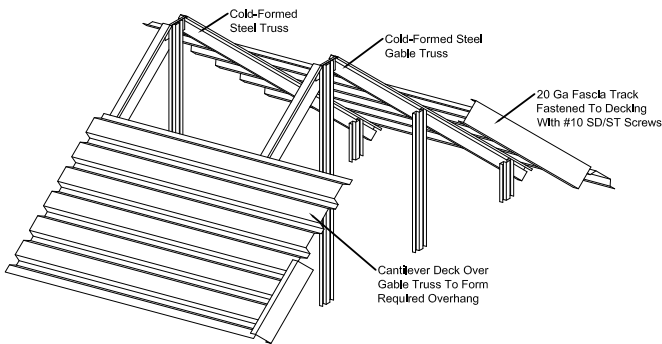
All Web Bracing Within Piggy-Back Trusses As Per Engineered Truss Drawings. All Diagonal Bracing As Per Roof Truss Layout.



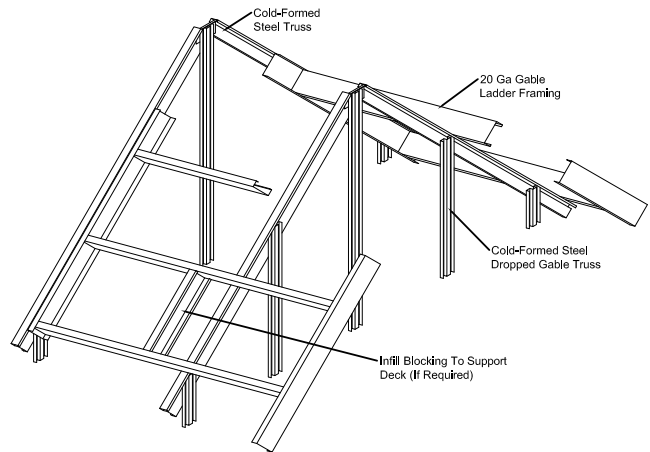
Piggy Back to Base Truss Connection Detail



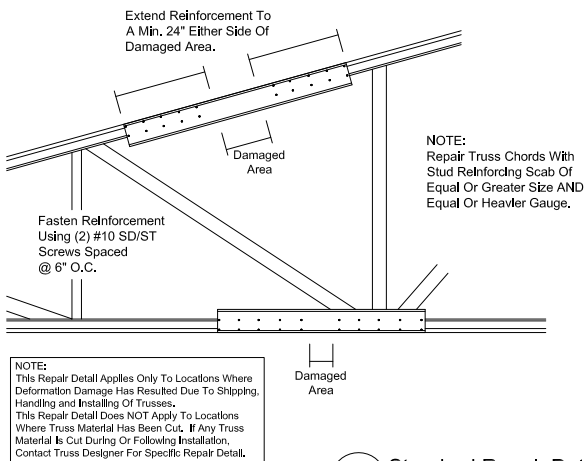
Standard Valley Detail



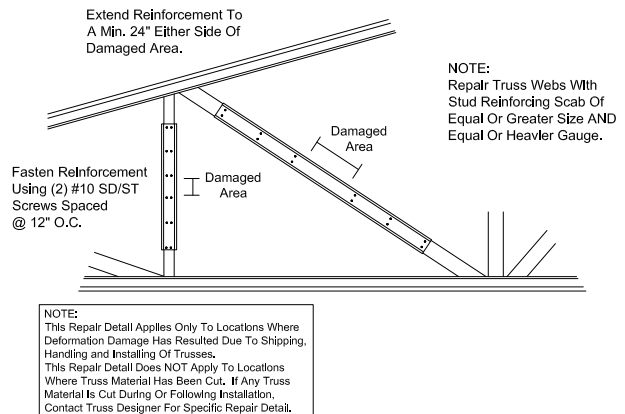
Overhang Detail Standard Detail N.T.S.



Overhang Detail Gable Ladder N.T.S.



Standard Repair Detail Damage Chords



Standard Repair Detail Damaged Webs

Design: **JV**

Scale: **N/A**

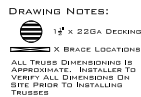
Location:

**Standard
Installation Details**

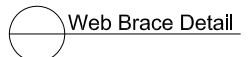
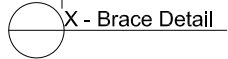
Standard

Phone: 1-877-251-6875
Fax: 1-866-873-0360
info@trusses.ca
www.trusses.ca





Truss Layout
N.T.S



Roofing Assembly Bracing Details

Standard



TRUSS DRAWING

All dimensions (Imperial Units) are shown as feet-inches-sixteenth inches
example: 5-3-8 = 5 feet 3 and 8/16 inches

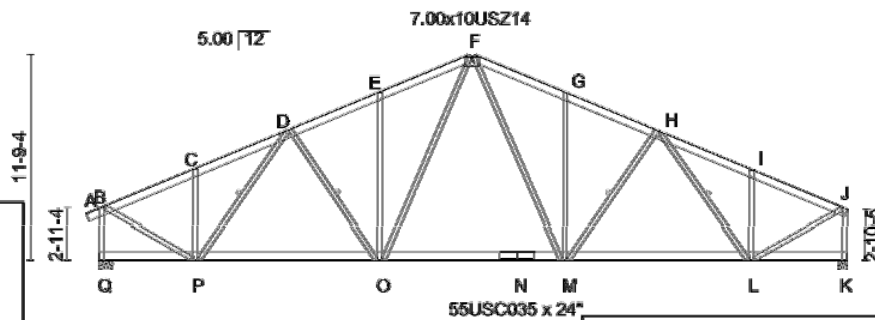
Member to member connection requirements are displayed above and below the TRUSS PLOT. The member connected is reference by a beginning joint and ending joint. ex. B-P: The first letter represents the joint where the connection is being made. Then number following is the number of fasteners required for the connection. ex. B-P:12 - 12 fasteners are required to connect member B-P at joint B

Top row - individual panel lengths
Bottom row - accumulative distance

Aegis reference number

Job	Truss	Truss Type	Qty	Ply	
		ROOF TRUSS	1	1	
A998969					
7/30/22 8:00 am 2024 Aegis Metal Framing, LLC Fri Jun 20 19:52:54 2020 Page 1					
SCREW QTY (Total = 265), All Screws Are #10-45					
CHORDS B-Q:12, F-E:14, F-G:14, J-K:14, H-I:14, G-H:12					
WEBS D-P:12, C-P:12, B-Q:12, D-P:12, E-O:12, F-O:12, G-M:12, H-L:12, I-L:12					

LOADING
Standard load applied to the design
G.Snow - Ground Snow Load
TCLL - Top Chord Live Load
TCDL - Top Chord Dead Load
BCLL - Bottom Chord Live Load
BCDL - Bottom Chord Dead Load



CSI
Maximum Combined Stress Index for the
Top Chord (TC), Bottom Chord (BC) and
Webs (WB) of all load cases

SCREW QTY	CHORDS	WEBS	LOADING (psf)	SPACING	CSI	DEFL	BRACING	SCREW VALUE
B-Q:12, F-E:14, F-G:14, J-K:14, H-I:14, G-H:12	L-H:5, L-E:5, L-J:12, H-F:12, B-Q:12, D-P:12, E-O:12, F-O:12, G-M:12, H-L:12, I-L:12	P-E:12, P-C:5, P-B:5	G.Snow 20.0 TCLL 30.0 TCDL 15.0 BCLL 0.0 BCDL 10.0	4'-0'-0 Code BOCA/NBSI	TC 0.88 BC 0.87 WB 0.98 (Matrix)	(in) (in) (in) (in) Vert(TL) -0.22 N >999 Vert(TL) -0.46 M-O >999 Horz(TL) 0.19 K Min Length / LL defl = 360	Sheathed or 2'-0'-0 on center purlin spacing, except end verticals. Rigid ceiling directly applied or 5'-10'-0 on center bracing 1 Row at midpt D-P, D-O, H-M, H-L	#10-16 T13; 035 243lb 046 419lb 057 513lb 073 519lb CONNECTORS USJ14: I= Invert D= Double V= Vertical R= Reverse

STEEL SECTION
TOP CHORD 55 USC 046 45 "Except"
B-Q 30 USW 057 45, J-K 30 USW 057 45
BOT CHORD 55 USC 025 45
WEBS 30 USW 046 45 "Except"
B-P 30 USW 057 45, D-O 30 USW 035 45
F-M 30 USW 035 45, H-M 30 USW 035 45
J-L 30 USW 057 45

BRACING specifies the Top Chord, Bottom Chord
and Web bracing requirements

REACTIONS (Size/material)
Max Gravity Q=4044/0-0-0(load case 1), K=4699/0-0-0(load case 1)
Max Uplift Q=-1515(load case 4), K=-1223(load case 4)

FORCES (lb) Maximum Compression Force
TOP CHORD B-Q=4789, A-B=69, B-C=5302, C-D=5365, D-E=5514, E-F=5584, F-G=5845, G-H=5827, H-I=5356, I-J=5262, J-K=4620
BOT CHORD B-P=4851, G-H=5419, H-I=4386, I-M=4386, M-N=5427, N-L=29
WEBS B-P=4859, C-P=997, D-P=1046, D-O=365, E-O=1008, F-O=1521, F-M=1524, G-M=1013, H-M=359, H-L=1096, I-L=1034, J-L=5236

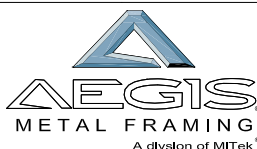
NOTES
1) This truss has been checked for unbalanced loading conditions.
2) This truss has been designed for the loads generated by 80 mph winds at 35 ft above ground level located 1 mi from the hurricane coastline. ASCE 7-98 components and cladding external pressure coefficients for the exterior (2) zone and 5.0 psf top chord and 5.0 psf bottom chord dead load are being used. The design assumes occupancy category II, terrain exposure C and internal pressure coefficient condition I. The building dimensions are 50 ft by 44 ft. If end verticals exist, the left is exposed and the right is not exposed. If cantilevers exist, they are exposed to wind. If porches exist, they are not exposed to wind. The steel DOL increase is 1.33
3) Provide mechanical connection (by others) of truss to bearing plate capable of withstanding 1515 lb uplift at joint Q and 1223 lb uplift at joint K.

LOAD CASE(S) Standard

FORCES shown reflect the maximum compression
force in the member from all load cases

REACTIONS:

Joint location of the support / bearing size entered/ bearing material entered



www.AegisMetalFraming.com

Truss Drawing

Location:

Standard

Phone: 1-877-251-6875

Fax: 1-866-873-0360

info@trusses.ca

www.trusses.ca





SPECIALIST IN COLD-FORMED STEEL CONSTRUCTION

Quality • Integrity • Design • Fabricate • Delivery • Experience
Combined 50+ years of excellence...and counting.



SPECIALIST IN COLD-FORMED STEEL CONSTRUCTION

Quality • Integrity • Design • Fabricate • Delivery • Experience
Combined 50+ years of excellence...and counting.



SPECIALIST IN COLD-FORMED STEEL CONSTRUCTION

Quality • Integrity • Design • Fabricate • Delivery • Experience
Combined 50+ years of excellence...and counting.

HOMEWOOD SUITES, OAKVILLE



SPECIALIST IN COLD-FORMED STEEL CONSTRUCTION

Quality • Integrity • Design • Fabricate • Delivery • Experience
Combined 50+ years of excellence...and counting.



SPECIALIST IN COLD-FORMED STEEL CONSTRUCTION

Quality • Integrity • Design • Fabricate • Delivery • Experience
Combined 50+ years of excellence...and counting.

WATERFORD RESIDENCE, KINGSTON



SPECIALIST IN COLD-FORMED STEEL CONSTRUCTION

Quality • Integrity • Design • Fabricate • Delivery • Experience
Combined 50+ years of excellence...and counting.

MACAULEY LODGE, ESQUIMALT, BC



SPECIALIST IN COLD-FORMED STEEL CONSTRUCTION

Quality • Integrity • Design • Fabricate • Delivery • Experience
Combined 50+ years of excellence...and counting.

MARINER VILLAGE, POINT EDWARD



SPECIALIST IN COLD-FORMED STEEL CONSTRUCTION

Quality • Integrity • Design • Fabricate • Delivery • Experience
Combined 50+ years of excellence...and counting.



SPECIALIST IN COLD-FORMED STEEL CONSTRUCTION

Quality • Integrity • Design • Fabricate • Delivery • Experience
Combined 50+ years of excellence...and counting.

BONNYVILLE RCMP DETACHMENT, AB



SYLVAN LAKE RCMP DETACHMENT, AB

SPECIALIST IN COLD-FORMED STEEL CONSTRUCTION

Quality • Integrity • Design • Fabricate • Delivery • Experience
Combined 50+ years of excellence...and counting.

COLUMBARIUM, ROCHESTER, MICHIGAN, USA



SPECIALIST IN COLD-FORMED STEEL CONSTRUCTION

Quality • Integrity • Design • Fabricate • Delivery • Experience
Combined 50+ years of excellence...and counting.

ST GABRIEL VILLA, CHELMSFORD



SPECIALIST IN COLD-FORMED STEEL CONSTRUCTION

Quality • Integrity • Design • Fabricate • Delivery • Experience
Combined 50+ years of excellence...and counting.

**WATERSIDE RETIREMENT RESIDENCE,
WASAGA BEACH**



SPECIALIST IN COLD-FORMED STEEL CONSTRUCTION

Quality • Integrity • Design • Fabricate • Delivery • Experience
Combined 50+ years of excellence...and counting.

TRILLIUM RETIREMENT VILLAGE, STRATHROY



SPECIALIST IN COLD-FORMED STEEL CONSTRUCTION

Quality • Integrity • Design • Fabricate • Delivery • Experience
Combined 50+ years of excellence...and counting.

RIVER RIDGE PHASE II, WINNIPEG, MB



SPECIALIST IN COLD-FORMED STEEL CONSTRUCTION

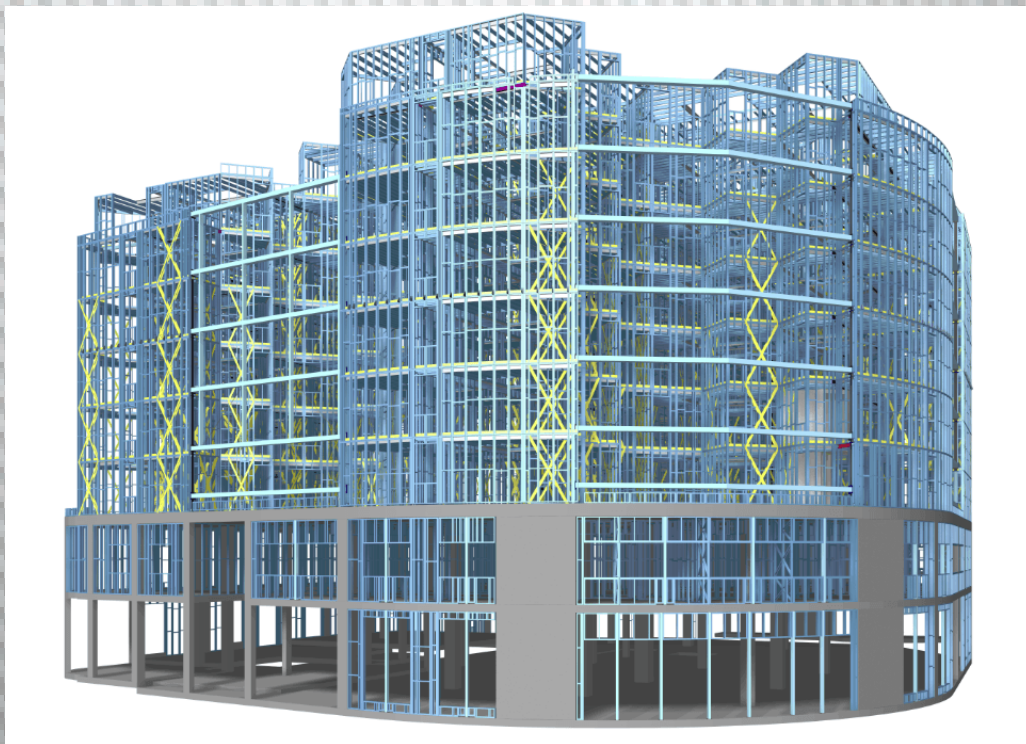
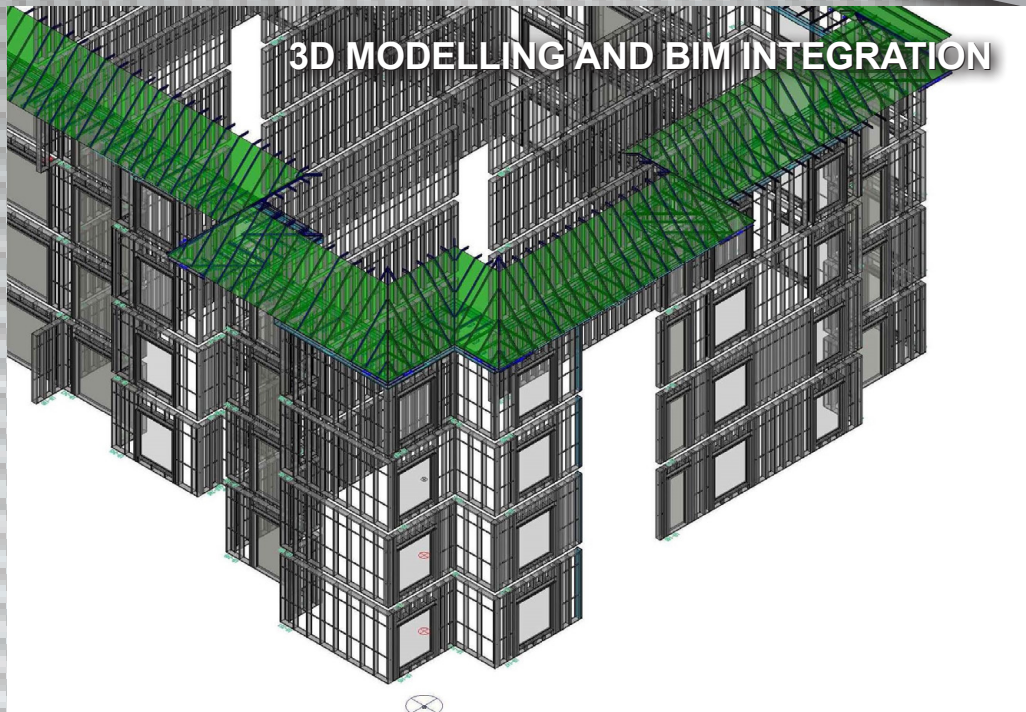
Quality • Integrity • Design • Fabricate • Delivery • Experience
Combined 50+ years of excellence...and counting.

FOUR-PLEX, SARNIA



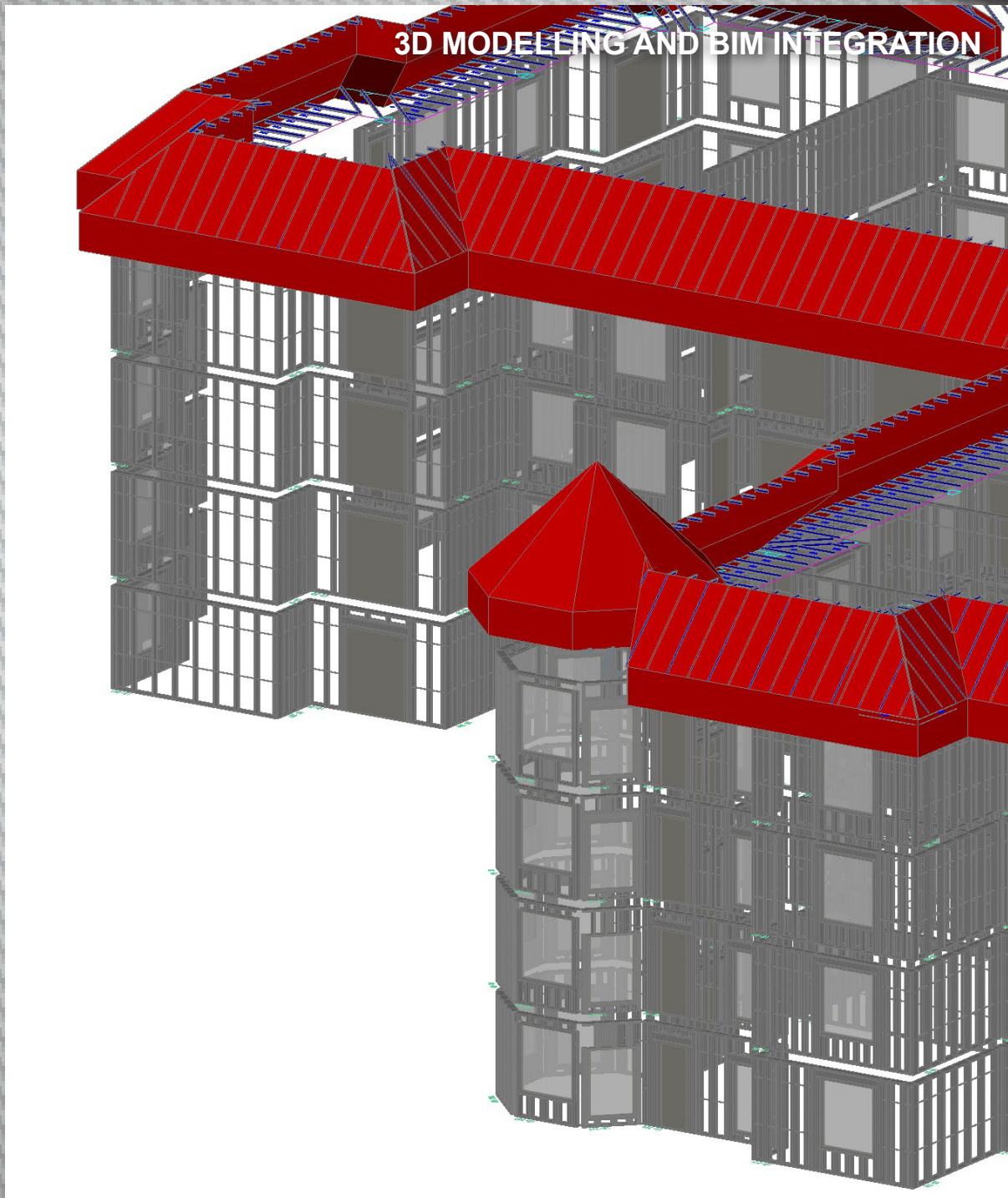
SPECIALIST IN COLD-FORMED STEEL CONSTRUCTION

Quality • Integrity • Design • Fabricate • Delivery • Experience
Combined 50+ years of excellence...and counting.



SPECIALIST IN COLD-FORMED STEEL CONSTRUCTION

Quality • Integrity • Design • Fabricate • Delivery • Experience
Combined 50+ years of excellence...and counting.

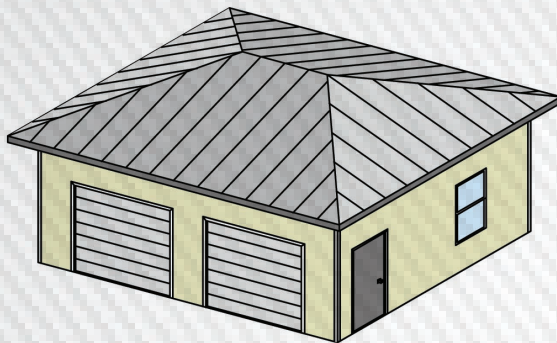
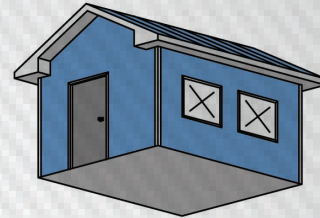


SPECIALIST IN COLD-FORMED STEEL CONSTRUCTION

Quality • Integrity • Design • Fabricate • Delivery • Experience
Combined 50+ years of excellence...and counting.

PANELIZED PRE-INSULATED COLD-FORMED STEEL STRUCTURES

NON-COMBUSTIBLE CONSTRUCTION
BUILDING SIZES STARTING FROM 6M²
CLEAR SPANS UP TO 25M (80'-0")

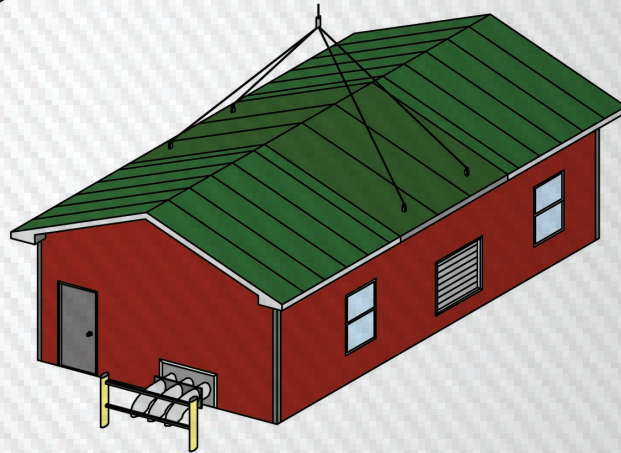


FULLY INSULATED PACKAGES AVAILABLE.

- PRE-INSULATED WALL PANELS WITH UP TO R40 RATING
- INSULATED CEILINGS UP TO R60 RATING.
- CUSTOM DESIGNED INSULATED FLOOR PACKAGES

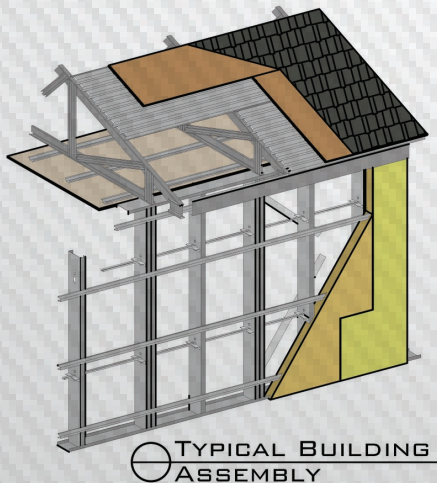
INCORPORATE OPENINGS OF ANY SIZE AND TYPE:

- DOORS
- WINDOWS
- LOUVRES
- HATCHES
- EXPLOSION RELIEF PANELS
- OVERHEAD DOORS
- REMOVABLE ROOF/WALL SECTIONS



CUSTOM DESIGNED TO ACCOMMODATE ANY TYPE OF FOUNDATION.

- SLAB ON GRADE
- FOUNDATION WALLS
- BEARING PILES
- CAISSON COLUMNS



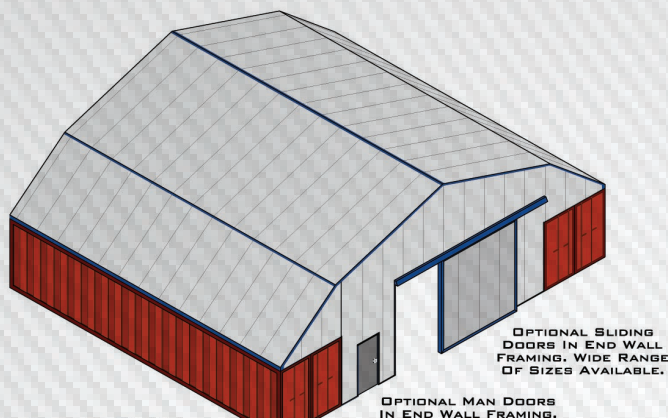
IDEAL FOR:

- ▼ GENERATOR SHELTERS
- ▼ PUMP HOUSES
- ▼ STORAGE UNITS
- ▼ MECHANICAL BUILDINGS
- ▼ COMPLETE INDUSTRIAL FACILITIES

SPECIALIST IN COLD-FORMED STEEL CONSTRUCTION

Quality • Integrity • Design • Fabricate • Delivery • Experience
Combined 50+ years of excellence...and counting.

MOVEABLE NON-PERMANENT STORAGE SOLUTIONS

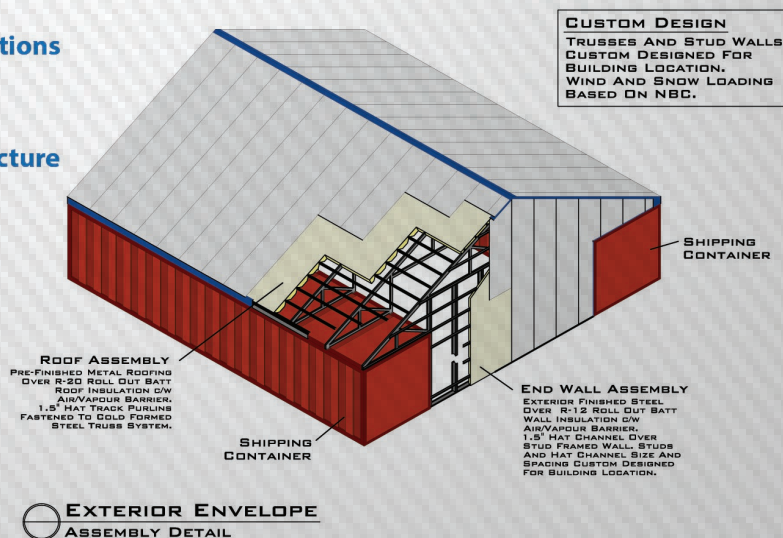


DUAL SLOPE ROOF C/W END WALL FRAMING

END WALL FRAMING CAN BE PROVIDED WITH ANY CONTAINER BUILDING MODEL. OPENINGS IN END WALL FRAMING CAN BE CUSTOM DESIGNED TO SUIT ANY APPLICATION.

Container Buildings unique storage solutions are ideal for mobile companies, remote locations or any application where a permanent structure footing is undesired or unnecessary. Recycled shipping containers mated to galvanized, 100% recycled/recyclable CFS framing make for a rigid structure that is fully transportable as and when your business needs to move. Using powerful software suites, ContainersBuildings can design and engineer according to your specific requirements.

- ▼ All metal construction - 100% non-combustible
- ▼ Fully engineered structure with all connections and bracing
- ▼ No foundation - classed as temporary structure
- ▼ Green product - recycled material
- ▼ Lockable storage at both sides
- ▼ No concrete to pour
- ▼ Durable painted metal roof
- ▼ Fully installed



SPECIALIST IN COLD-FORMED STEEL CONSTRUCTION

Quality • Integrity • Design • Fabricate • Delivery • Experience
Combined 50+ years of excellence...and counting.



877.251.6875
trusses.ca
info@trusses.ca



Build it with steel.

AUTHORIZED BUILDER



VanderWal Group is a leading fabricator/supplier specializing in steel structures ranging from industrial and commercial to custom projects for the agricultural, community, and retail industries.

As an authorized supplier of Nucor Building Systems, VanderWal Group is able to offer you a wide array of building solutions that are custom designed to your specific needs, yet cost-effective, efficient, and faster to erect than conventional construction methods.

Contact us today to find out how we can save you time and money on your next project.



SPECIALIST IN COLD-FORMED STEEL CONSTRUCTION

Quality • Integrity • Design • Fabricate • Delivery • Experience
Combined 50+ years of excellence...and counting.



Cold-Formed Steel Frame (CFS) in conjunction with a pre-engineered building is an ideal solution for an industrial development.



Custom packages available from base structural framing to a complete turn-key package

SPECIALIST IN COLD-FORMED STEEL CONSTRUCTION

Quality • Integrity • Design • Fabricate • Delivery • Experience
Combined 50+ years of excellence...and counting.